



*Autorità di Bacino
dei Fiumi Liri - Garigliano e Volturno*

**PROGETTAZIONE PRELIMINARE DELLE OPERE PRIORITARIE DA
REALIZZARE PER LA RISOLUZIONE DELLE CRITICITÀ LEGATE
ALL'USO E ALLA DISPONIBILITÀ DELLA RISORSA IDRICA NELLA
PIANA DEL FUCINO – REGIONE ABRUZZO**

CIG 4469094D06

CUP F84I10000170002



2.3.5

Rilievi topografici

Sezioni trasversali d'alveo e opere
rilevate - Fiume Giovenco

Scala

varie

Raggruppamento Temporaneo di Imprese

Il progettista

Il responsabile del progetto

Capogruppo Mandataria

Mandanti



WATER AND NATURAL
RESOURCES
CONSULTANTS



BETA Studio srl
Dott.ssa Marilena SEGATO

BETA Studio srl
Ing. Massimo COCCATO



Via Guido Rossa, 29/A
35020 Ponte S. Nicolò
Padova - Italia
info@betastudio.it
www.betastudio.it
tel +390498961120
fax +390498961090

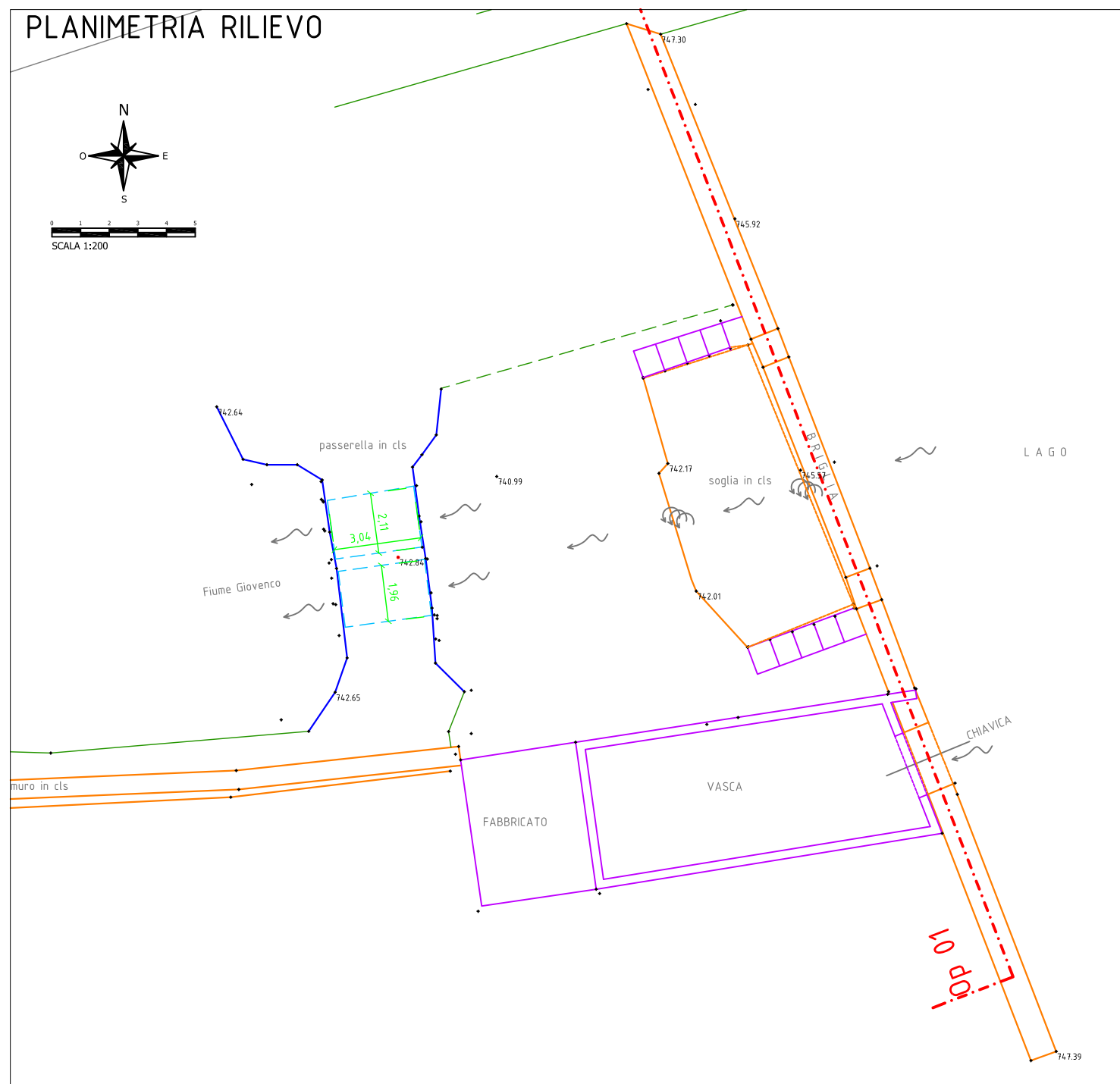
0	Prima emissione	17.12.2013	dott. F. VAN DER BEEK	dott.ssa M. SEGATO	ing. M. COCCATO
rev.	motivo	data	redatto	verificato	approvato

cod. el. 0760ST020305

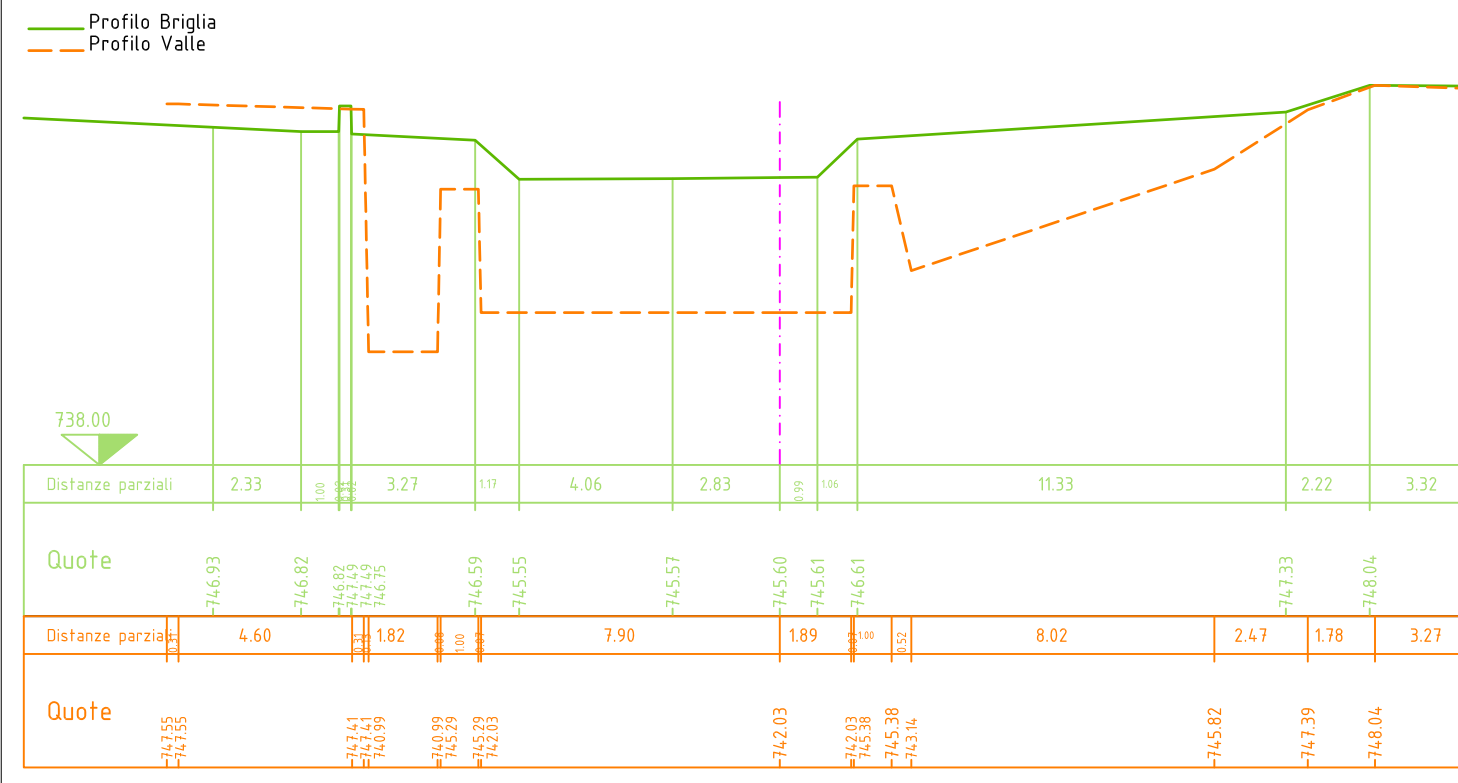
file 0760ST020305_00.dwg

OPERA 01

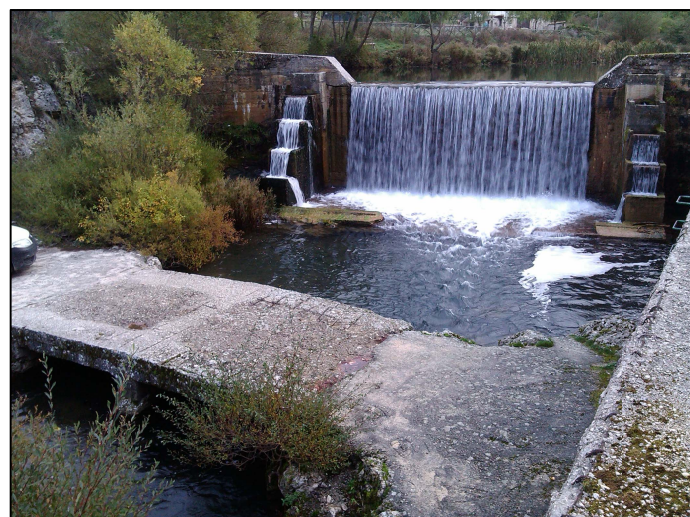
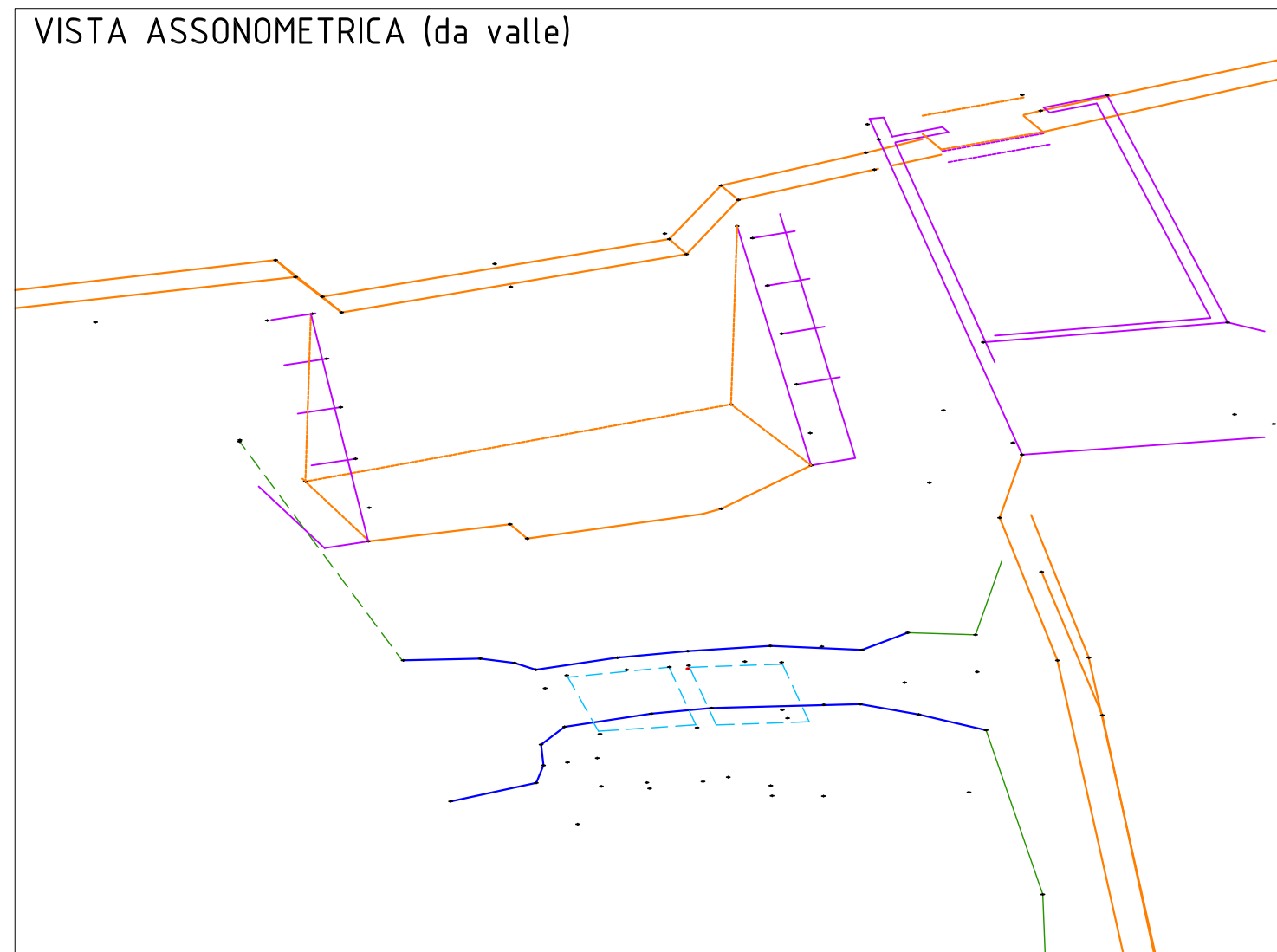
PLANIMETRIA RILIEVO



SEZIONE TRASVERSALE OPERA 01 - (Scala 1:200)

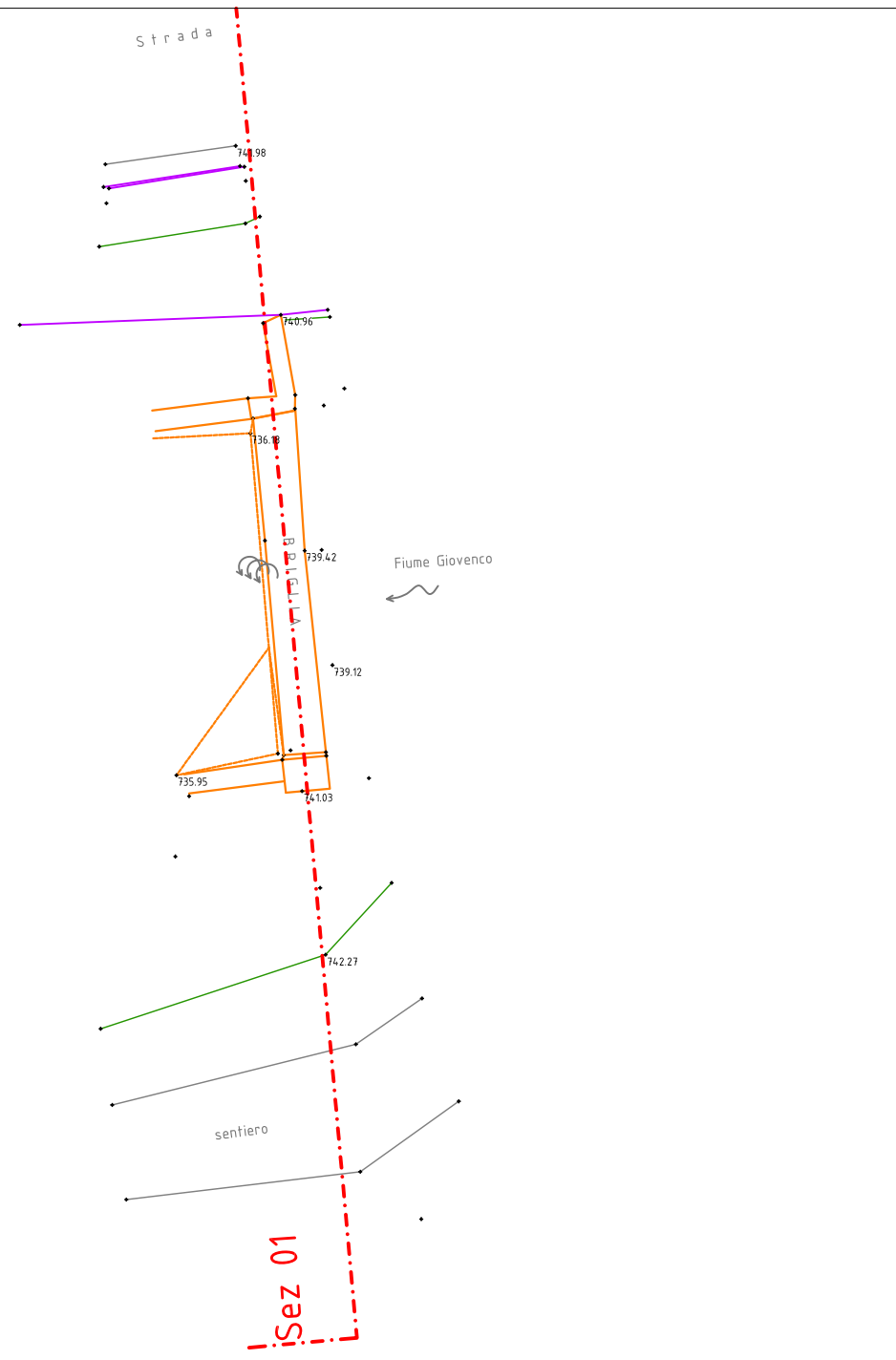
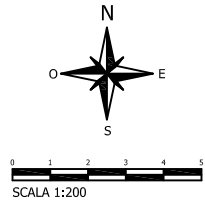


VISTA ASSONOMETRICA (da valle)

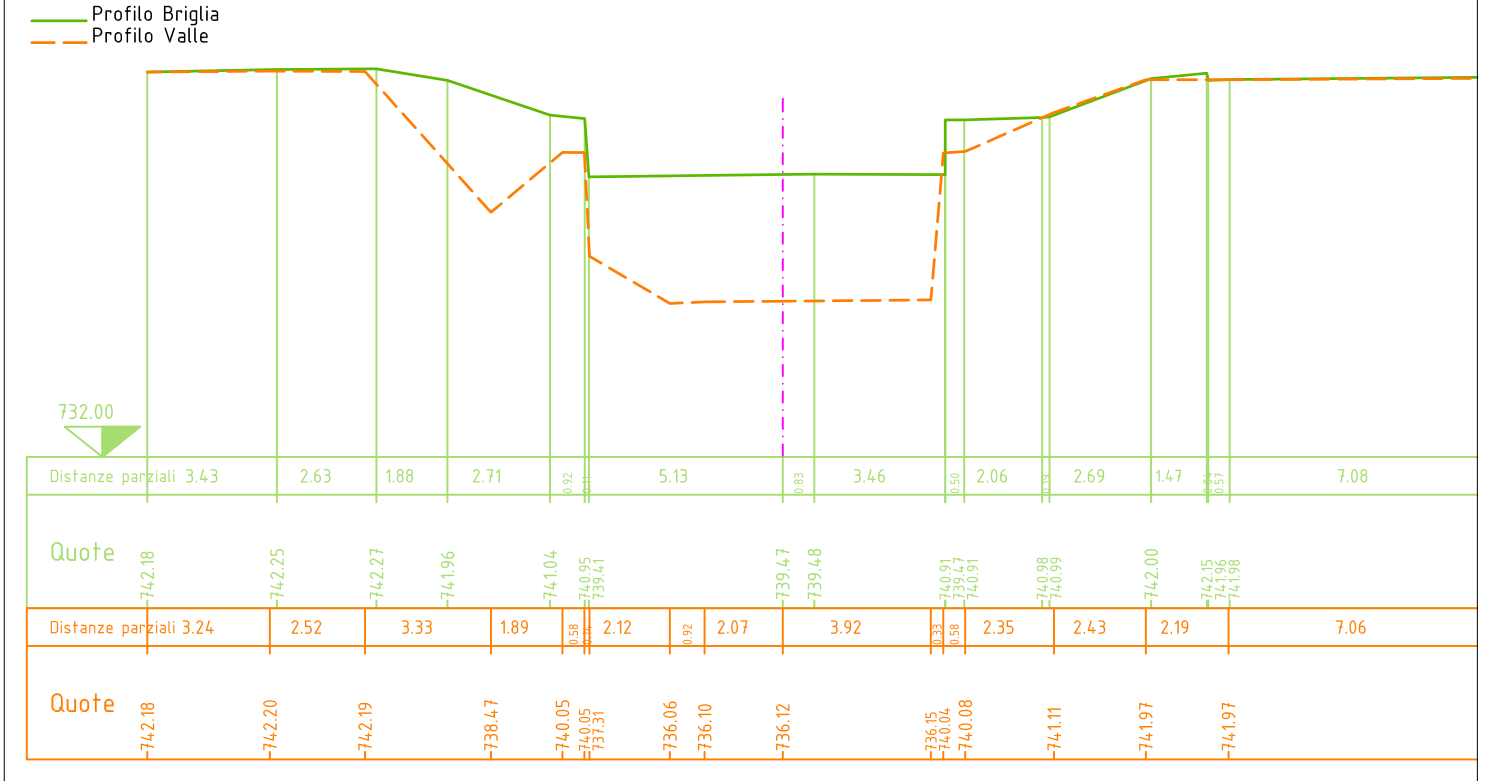


Sezione 01

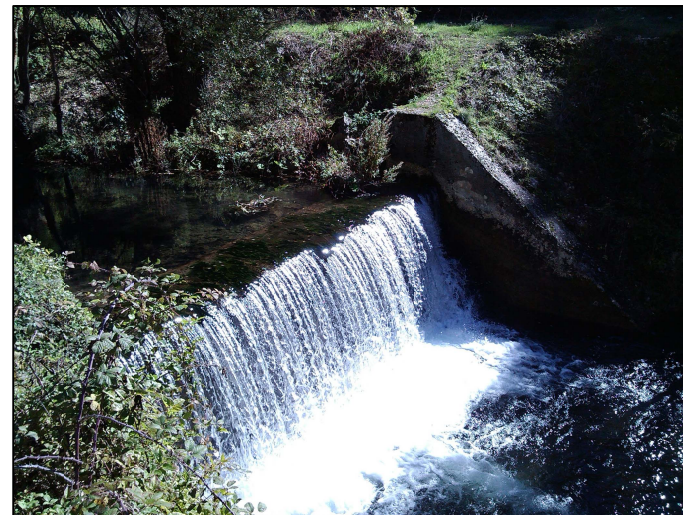
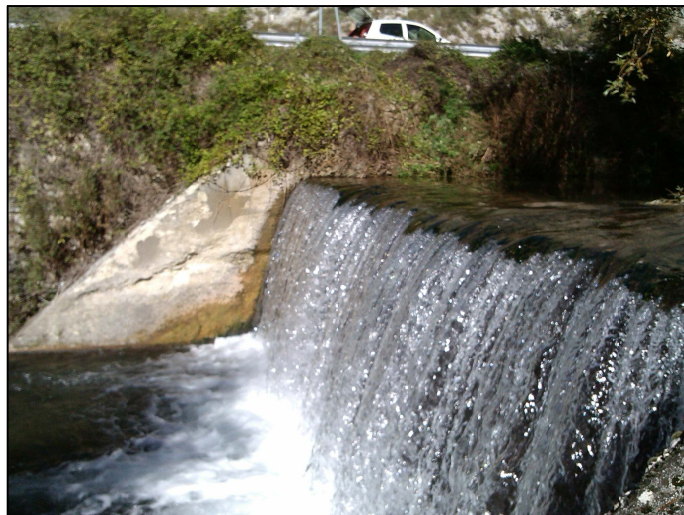
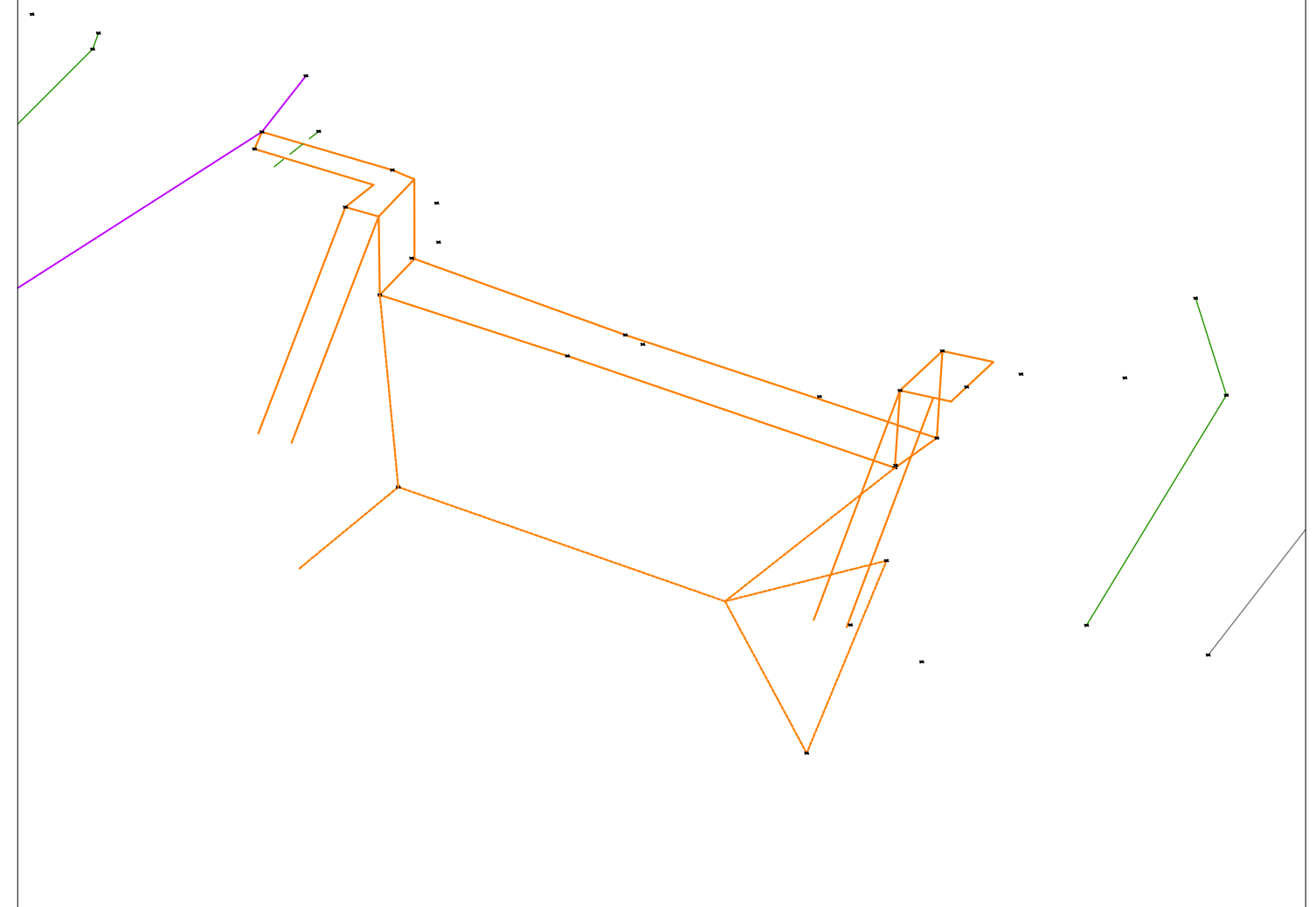
PLANIMETRIA RILIEVO



SEZIONE TRASVERSALE SEZIONE 01 - (Scala 1:200)

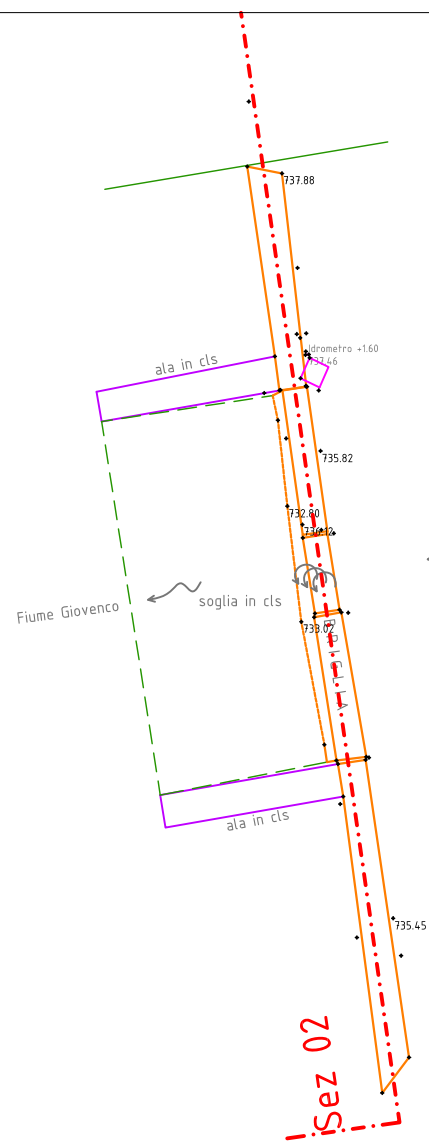
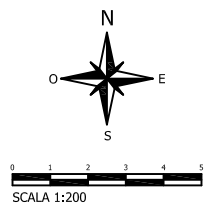


VISTA ASSONOMETRICA (da valle)

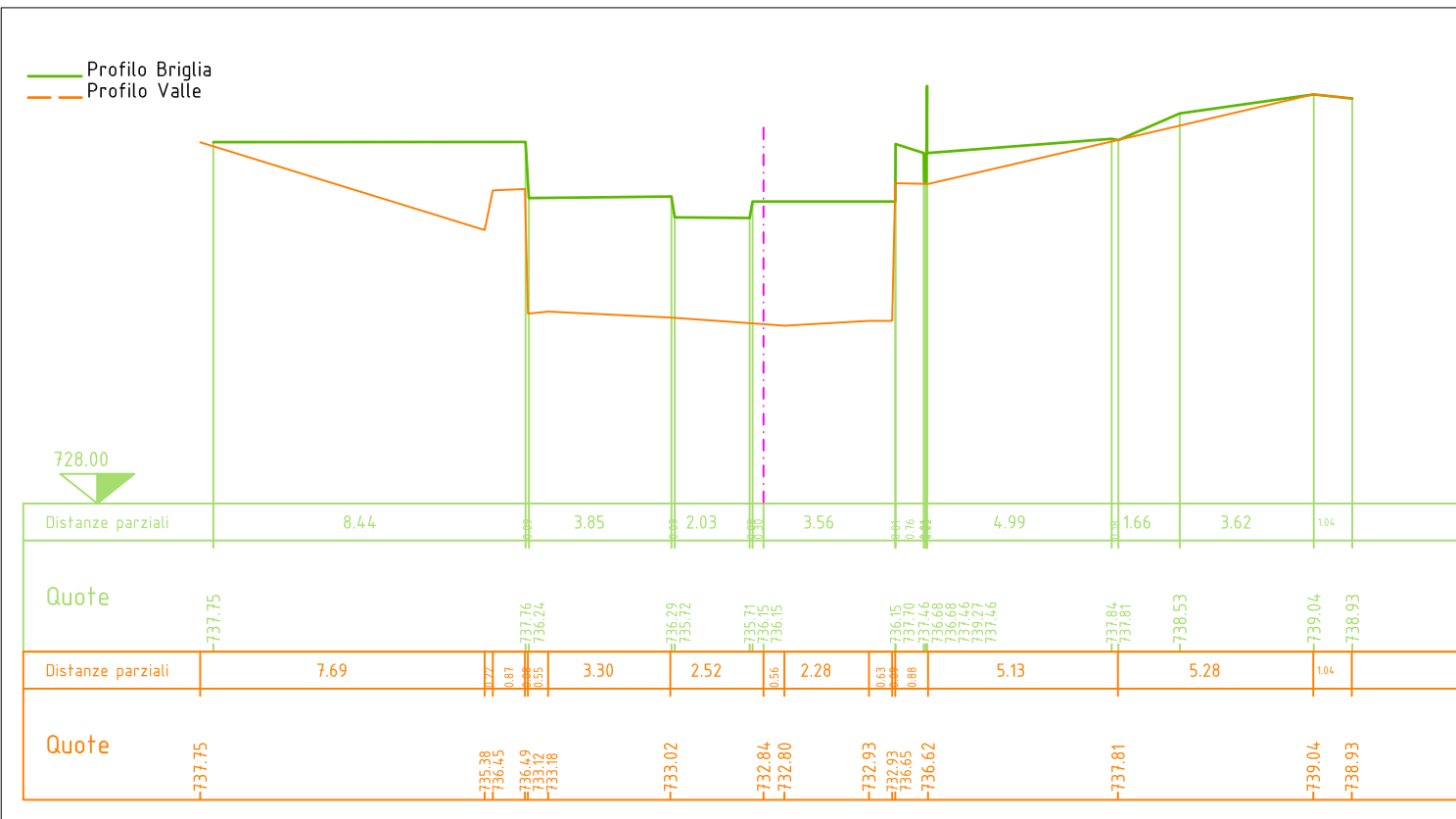


Sezione 02

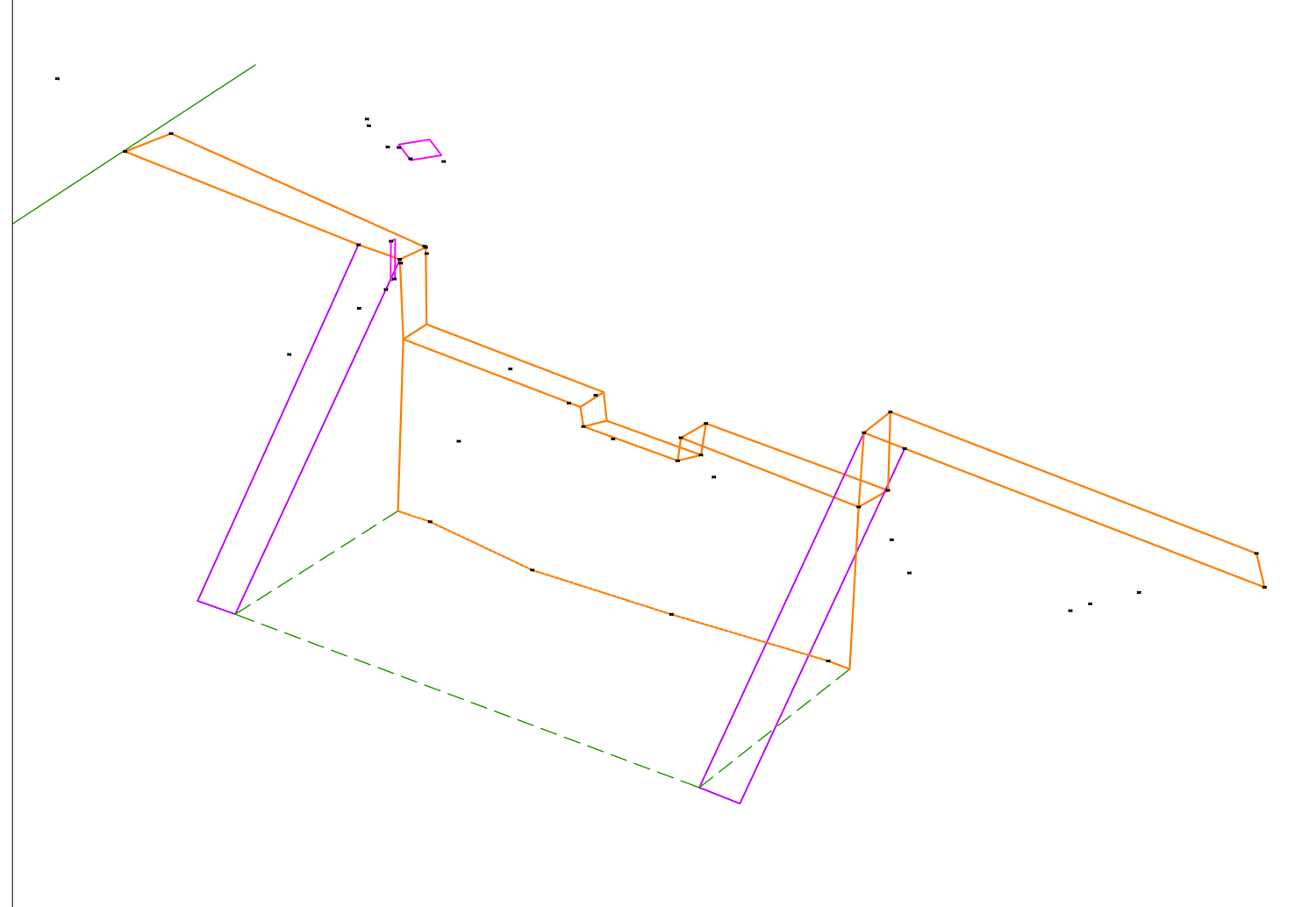
PLANIMETRIA RILIEVO



SEZIONE TRASVERSALE 02 - (Scala 1:200)

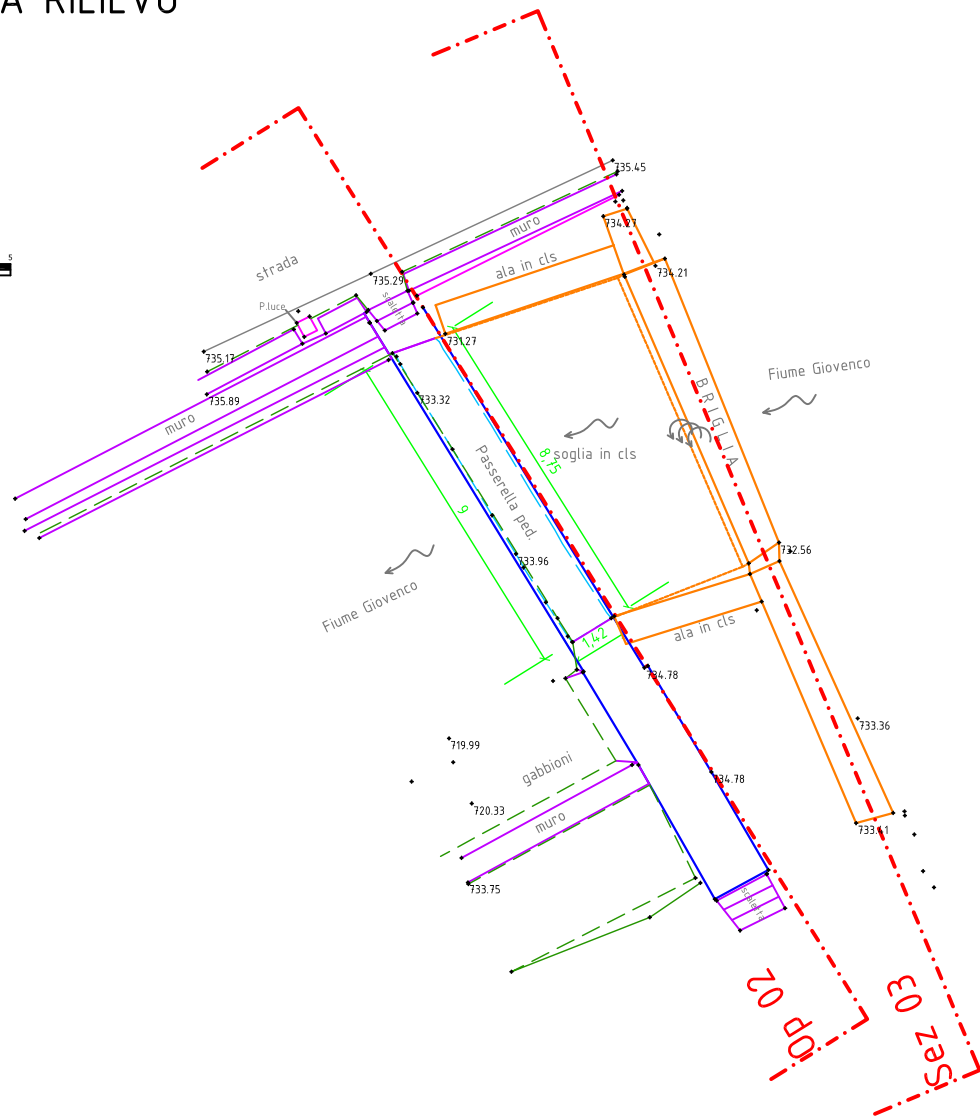
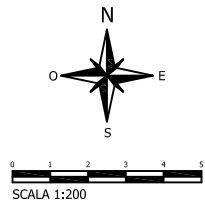


VISTA ASSONOMETRICA (da valle)

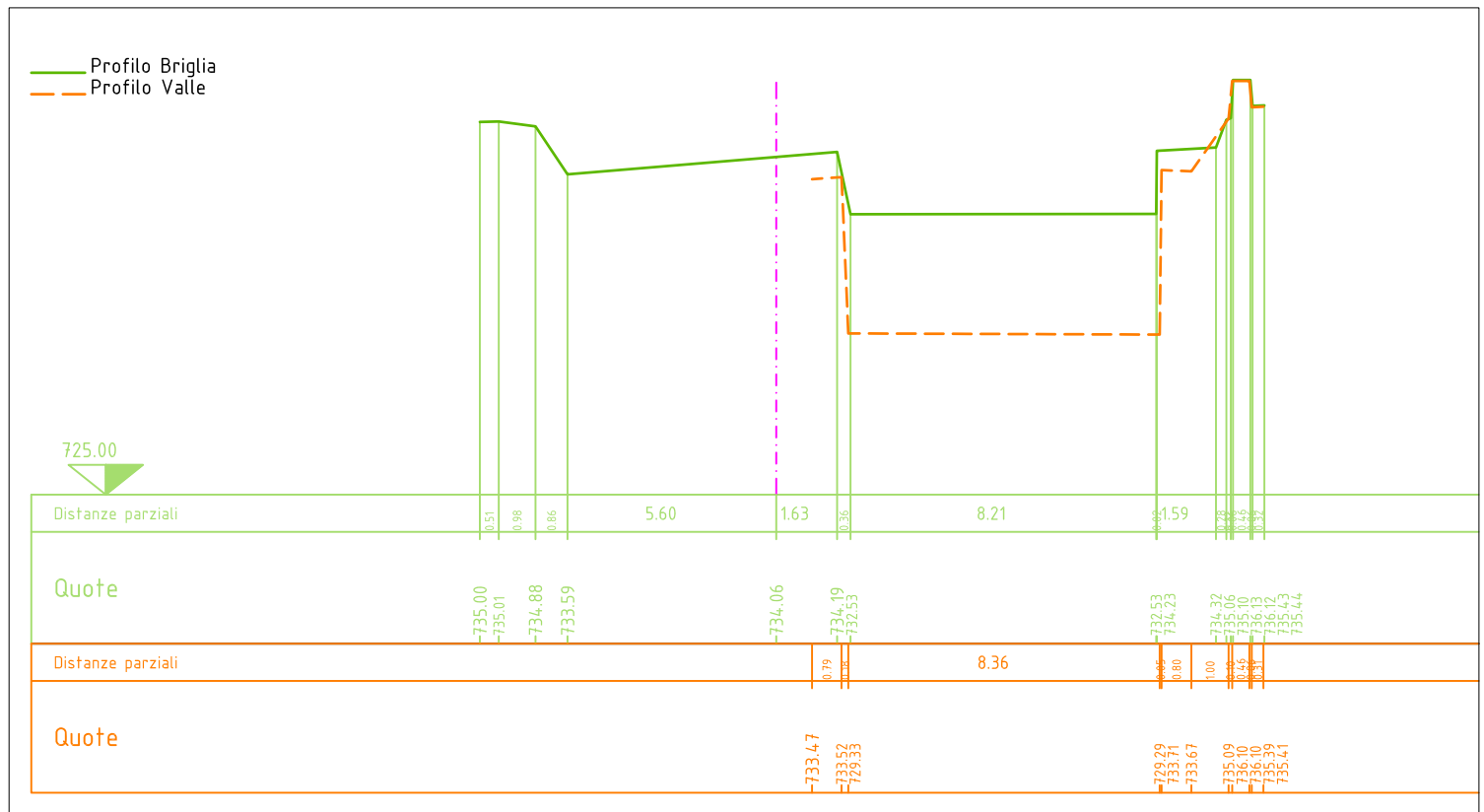


Sezione 03 - Opera 02

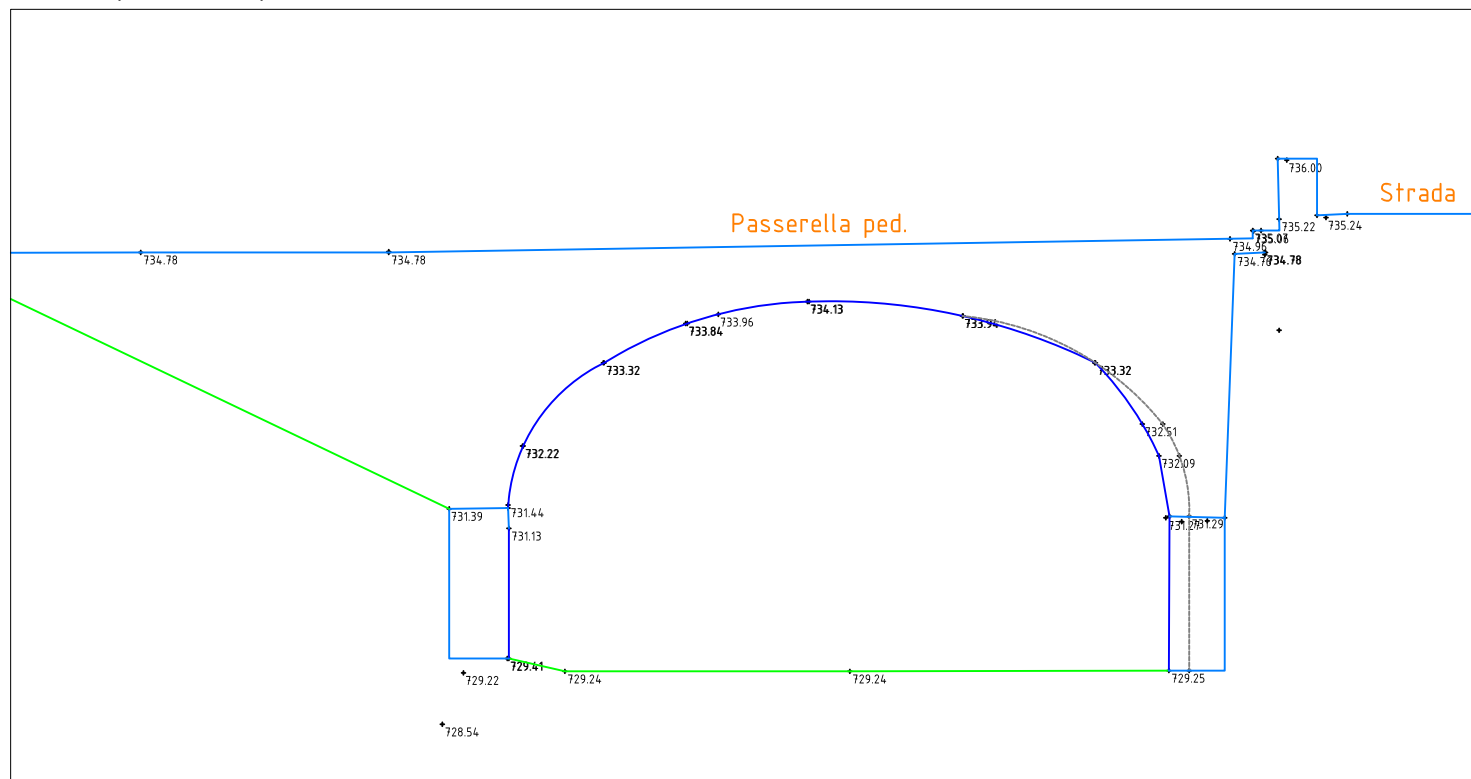
PLANIMETRIA RILIEVO



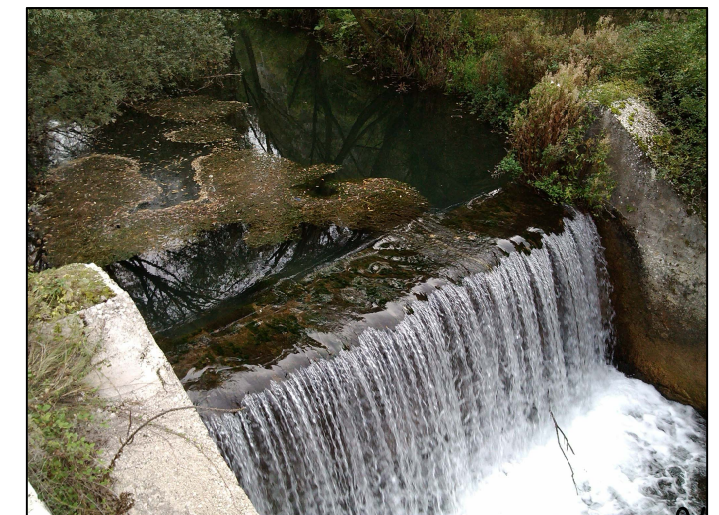
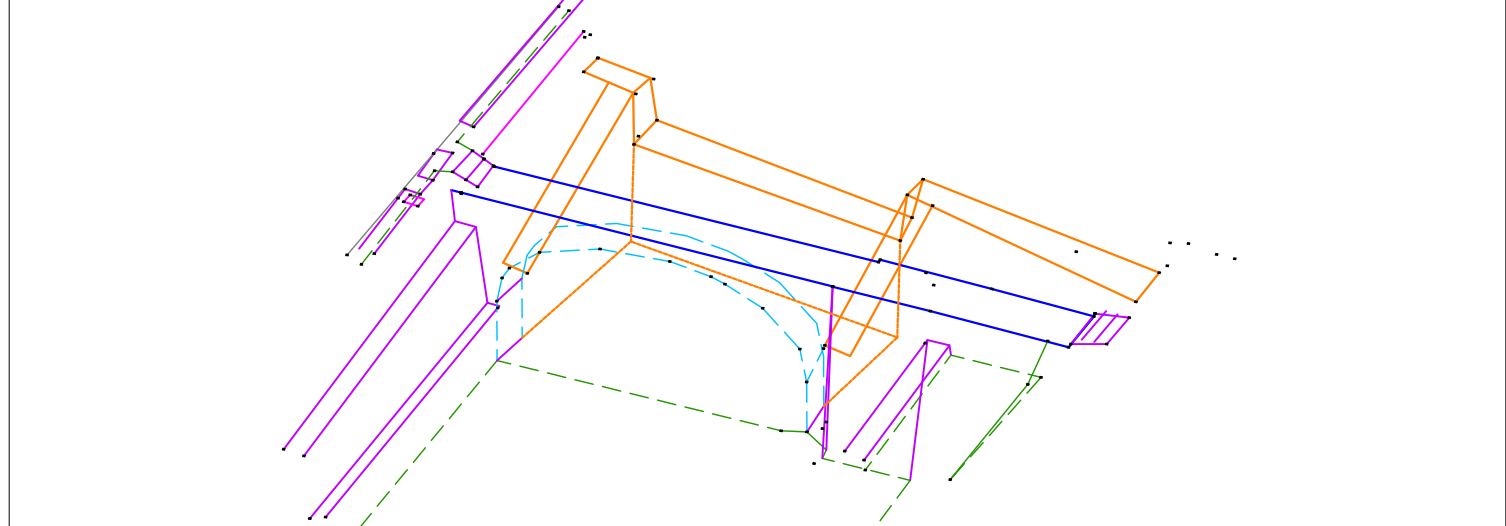
SEZIONE TRASVERSALE 03 - (Scala 1:200)



Prospetto Opera 02 - (Scala 1:100)

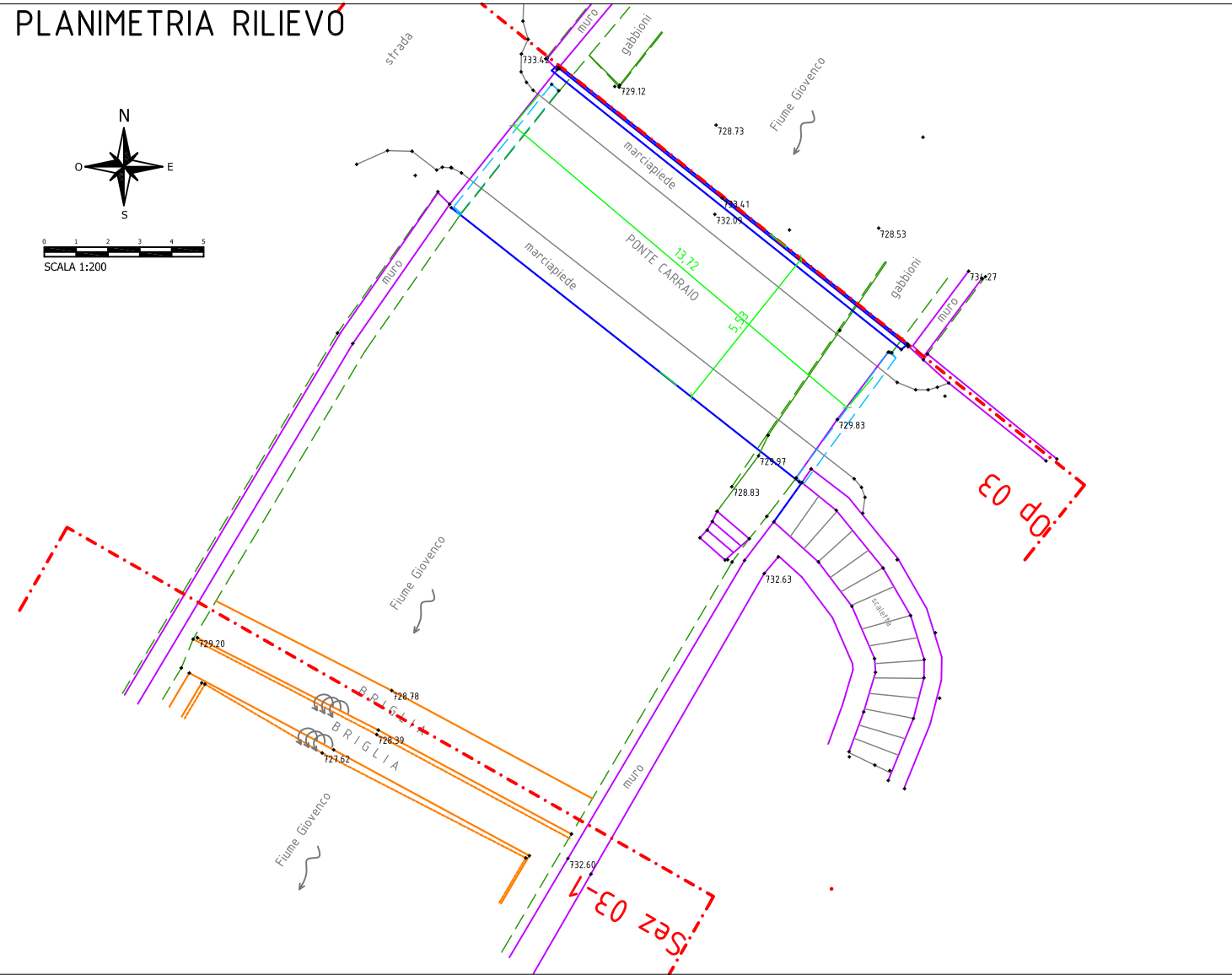


VISTA ASSONOMETRICA (da valle)

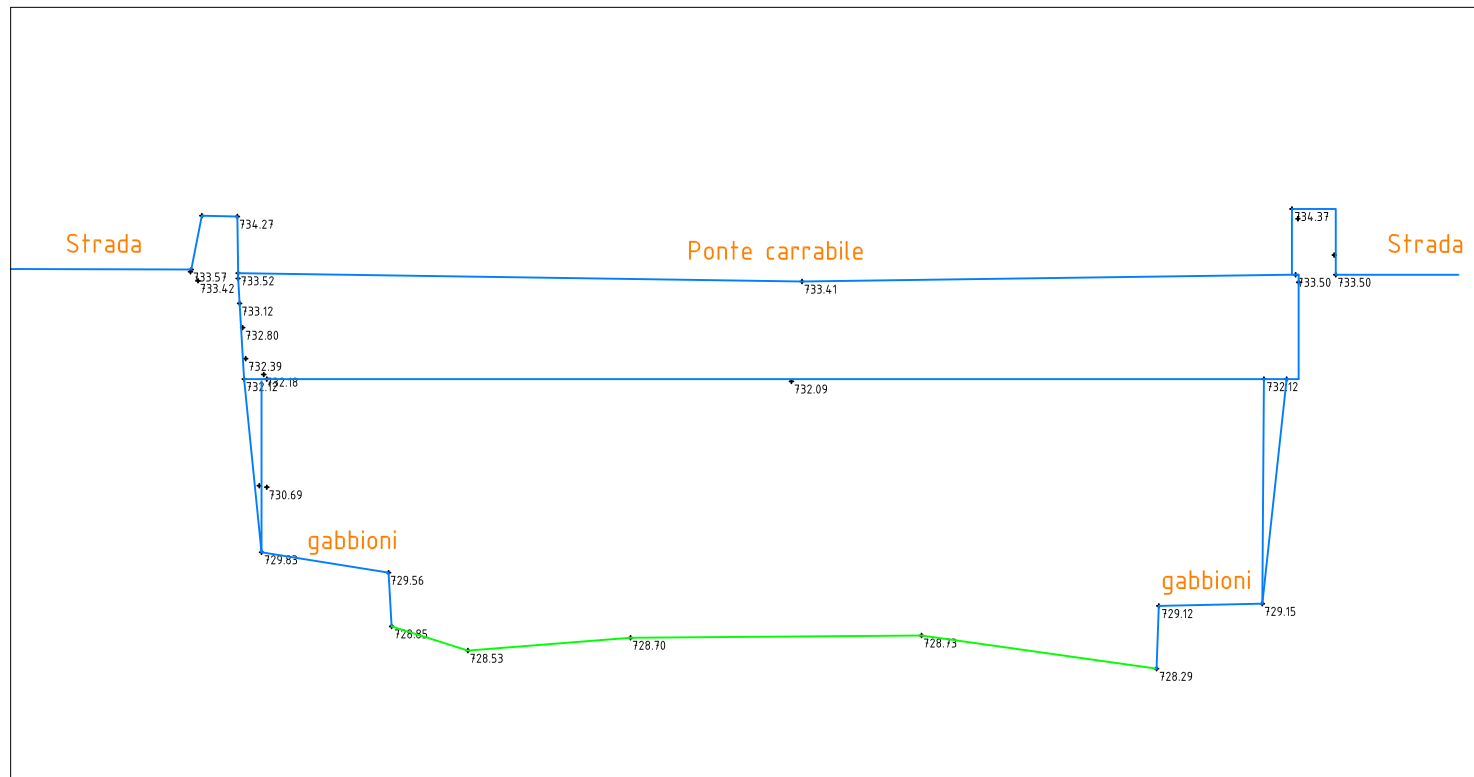


Opera 03 - Sezione 03-1

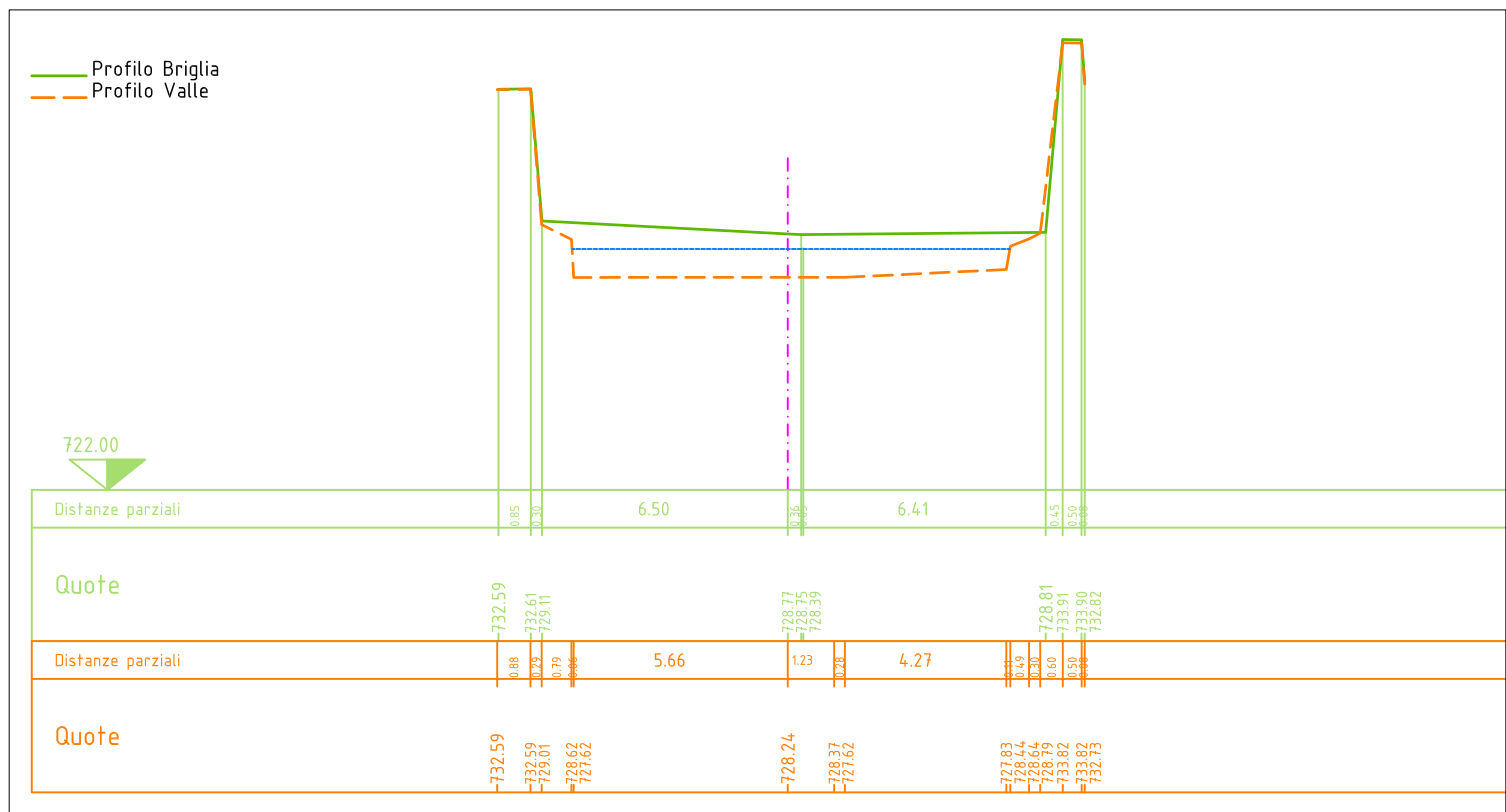
PLANIMETRIA RILIEVO



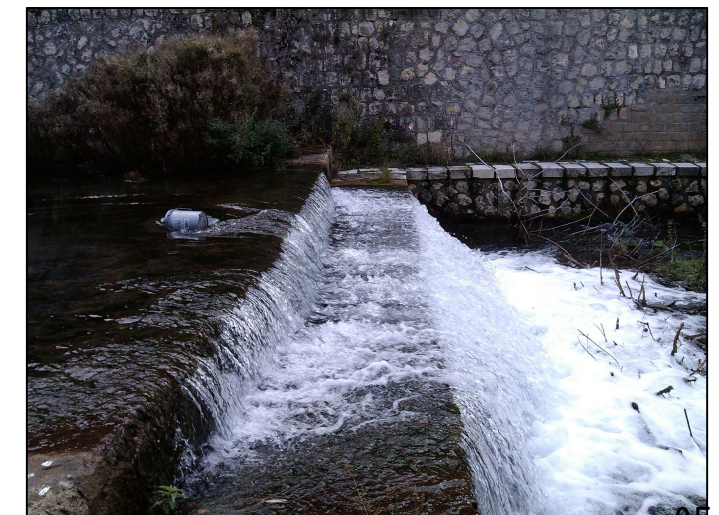
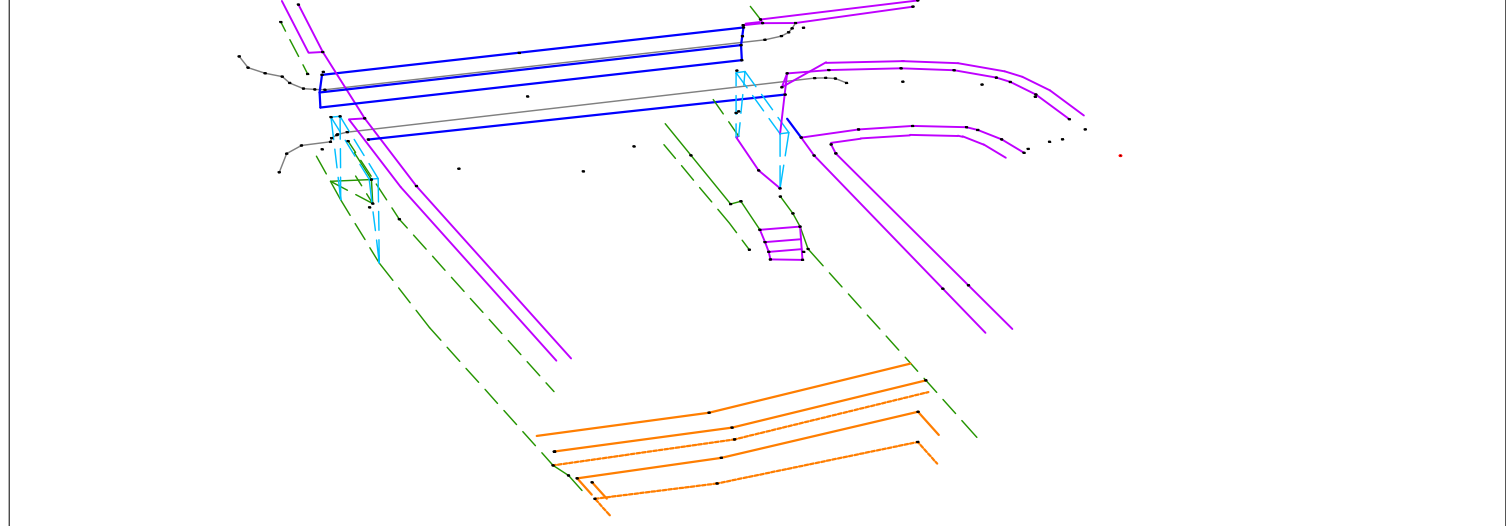
Prospetto Opera 03 - (Scala 1:100)



SEZIONE TRASVERSALE 03-1 - (Scala 1:200)

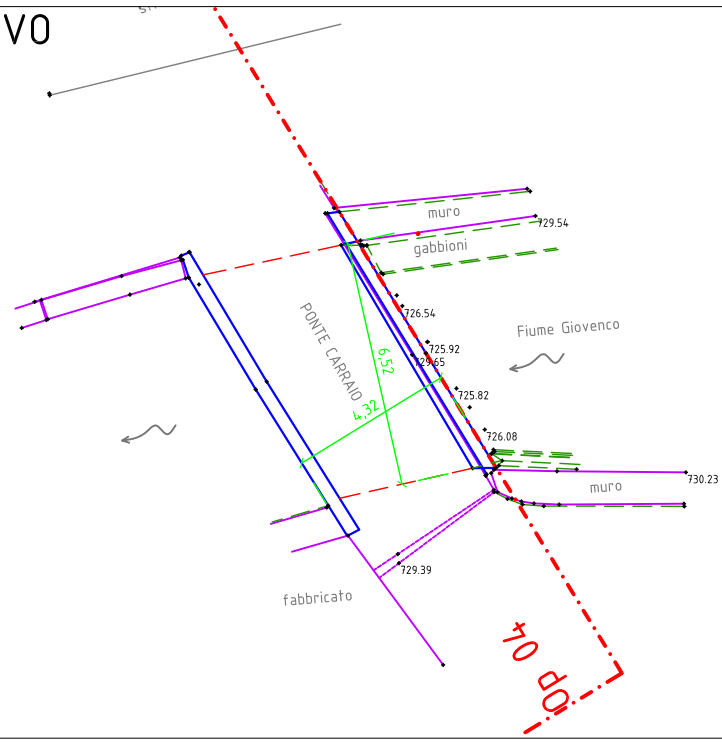
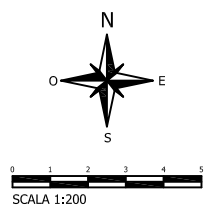


VISTA ASSONOMETRICA (da valle)



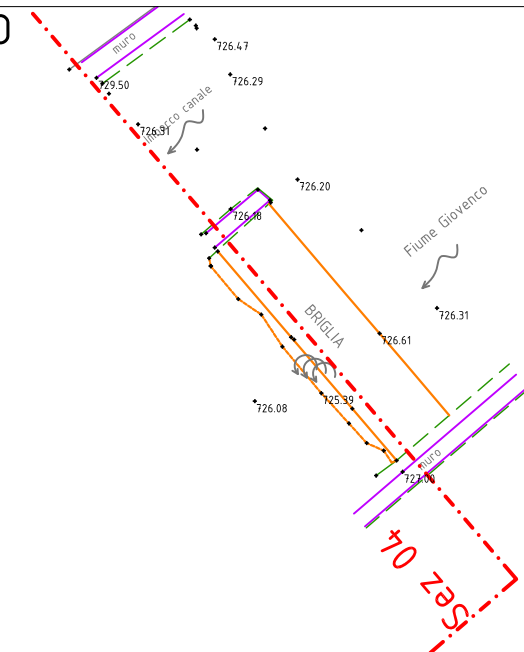
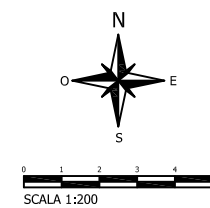
Opera 04

PLANIMETRIA RILIEVO

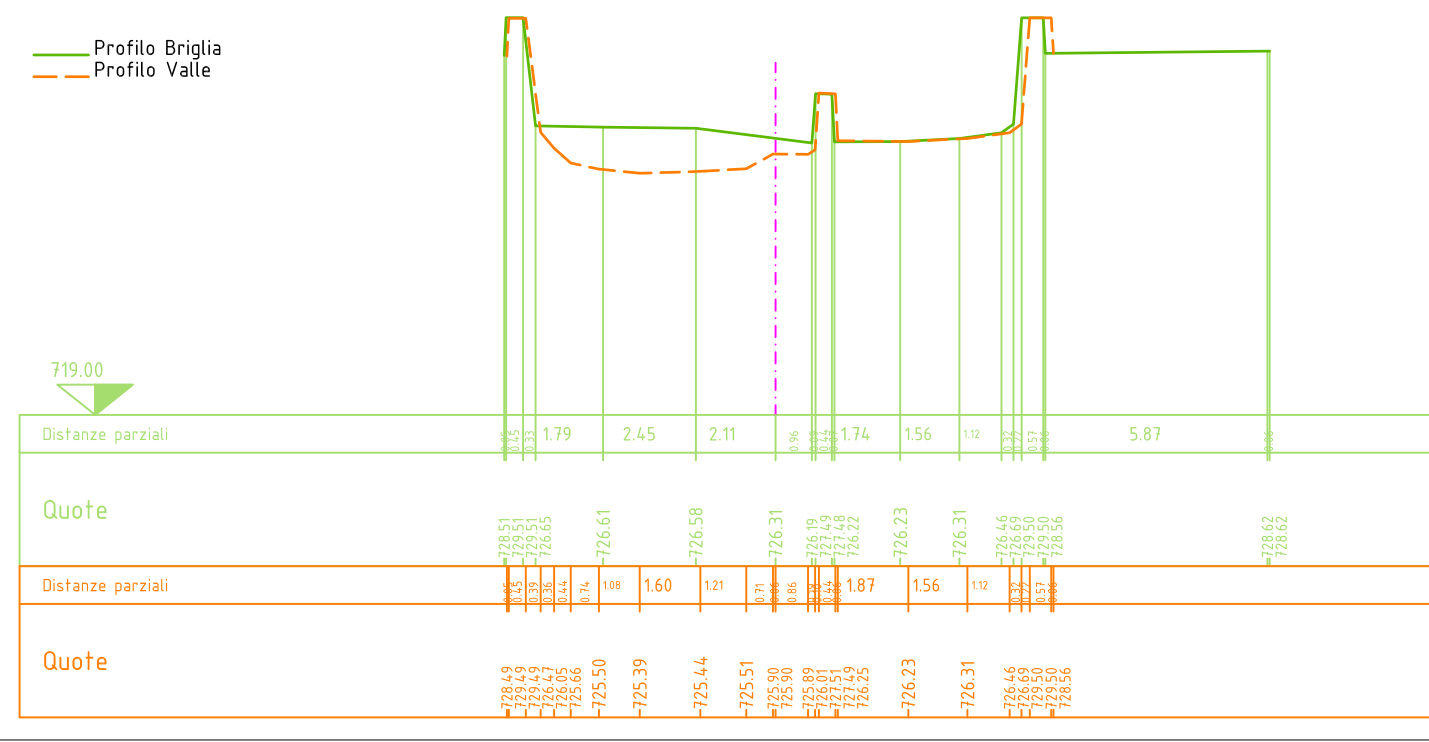


Sezione 04

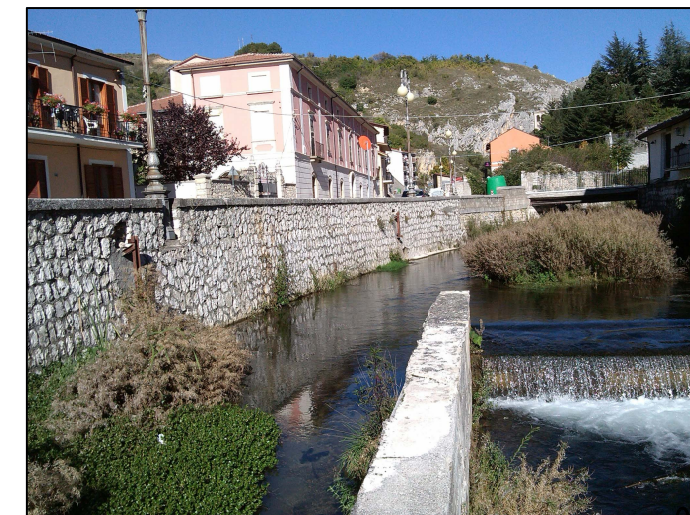
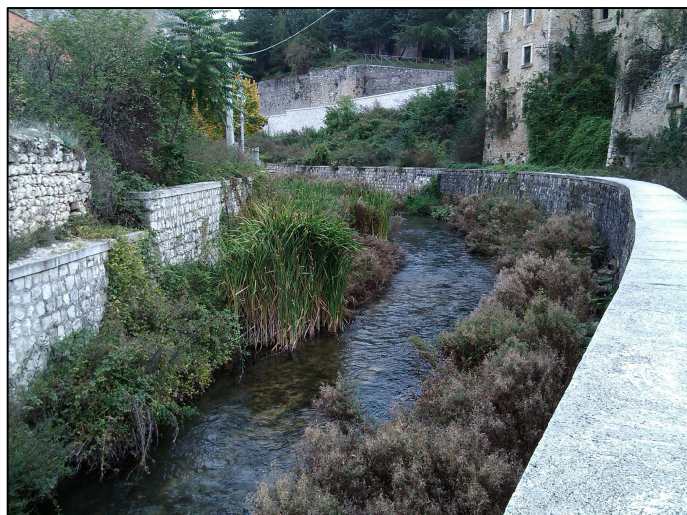
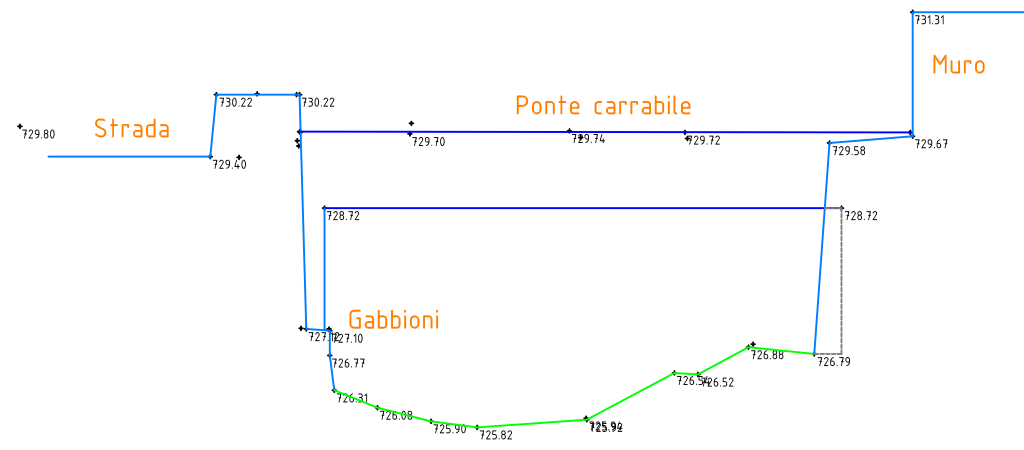
PLANIMETRIA RILIEVO



SEZIONE TRASVERSALE 04 - (Scala 1:200)

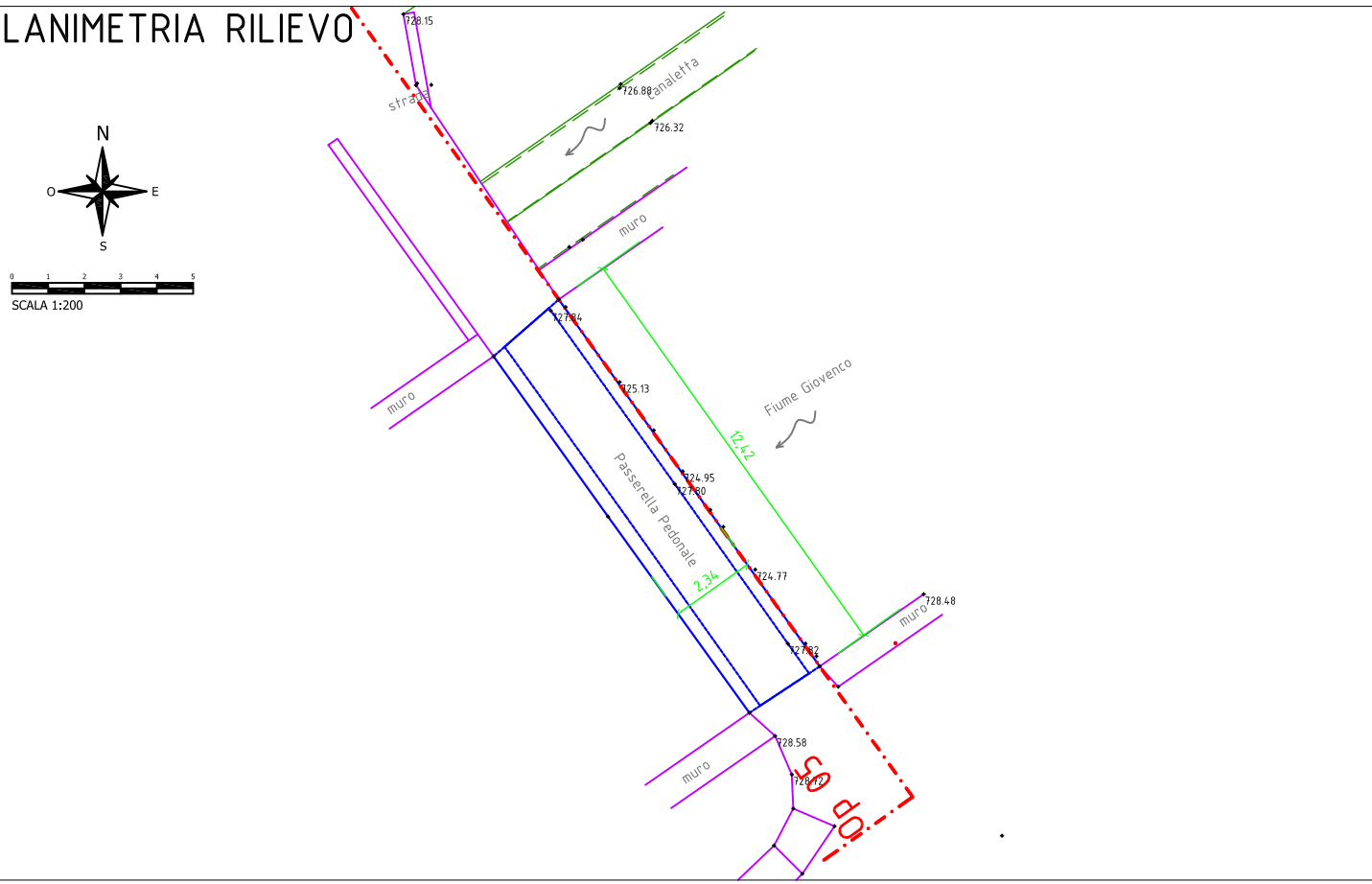


Prospetto Opera 04 - (Scala 1:100)

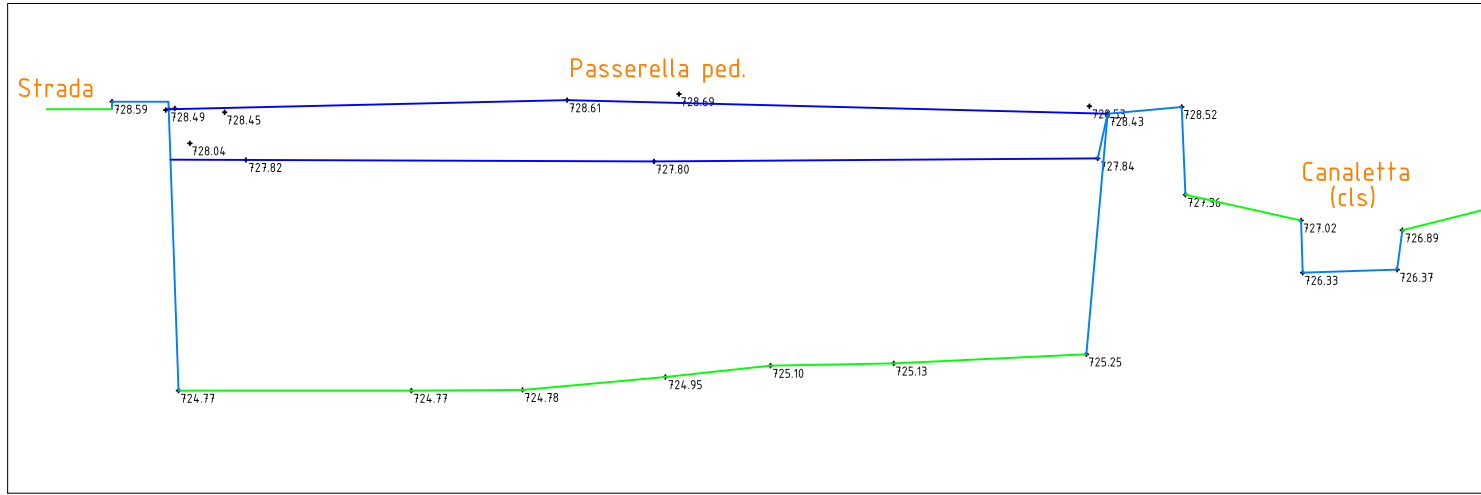


Opera 05

PLANIMETRIA RILIEVO

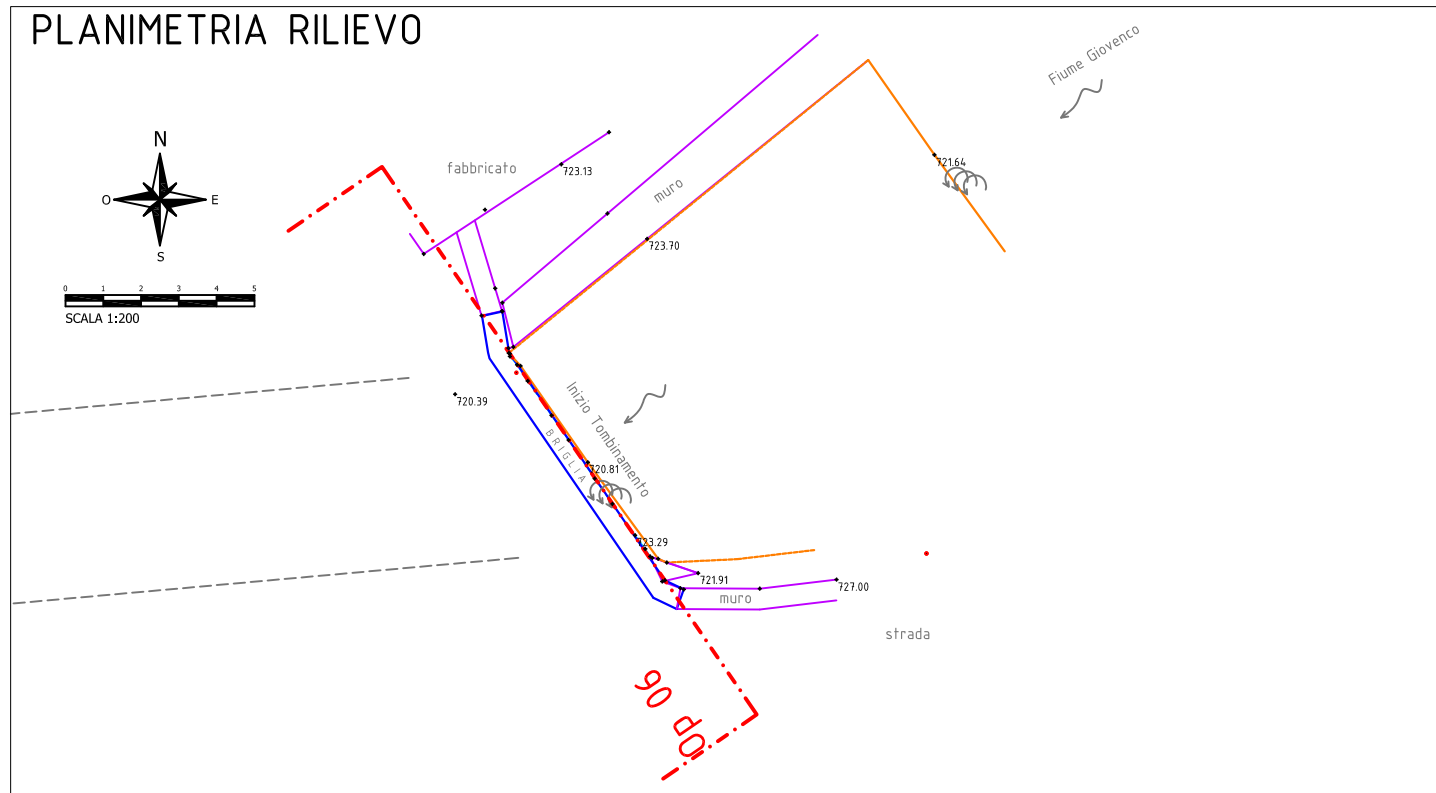


Prospetto Opera 05 - (Scala 1:100)

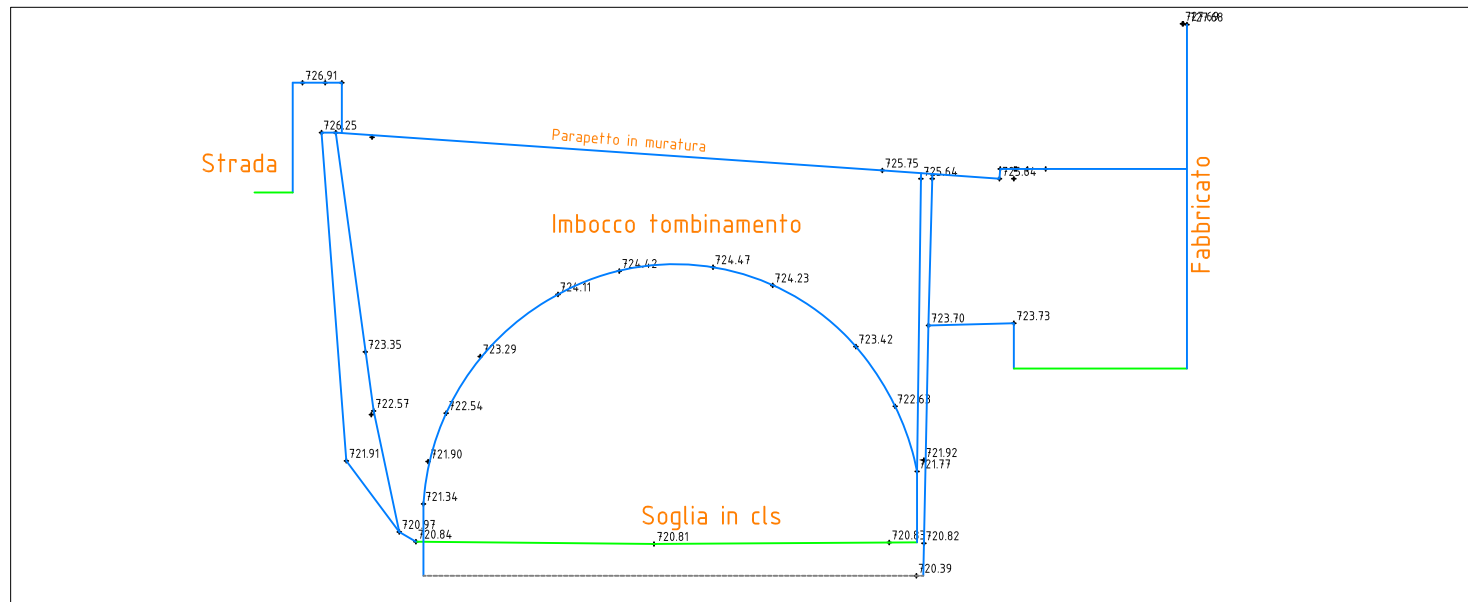


Opera 06

PLANIMETRIA RILIEVO

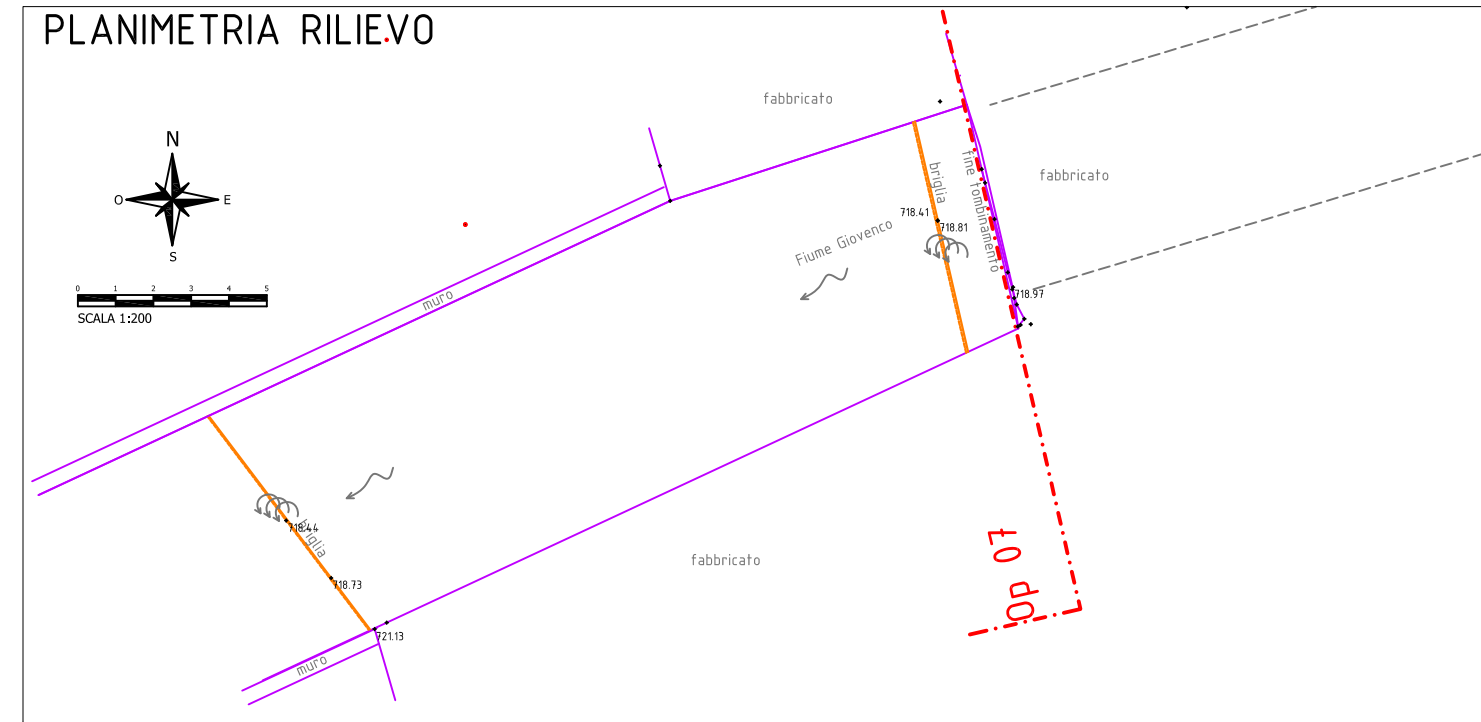


Prospetto Opera 06 - (Scala 1:100)

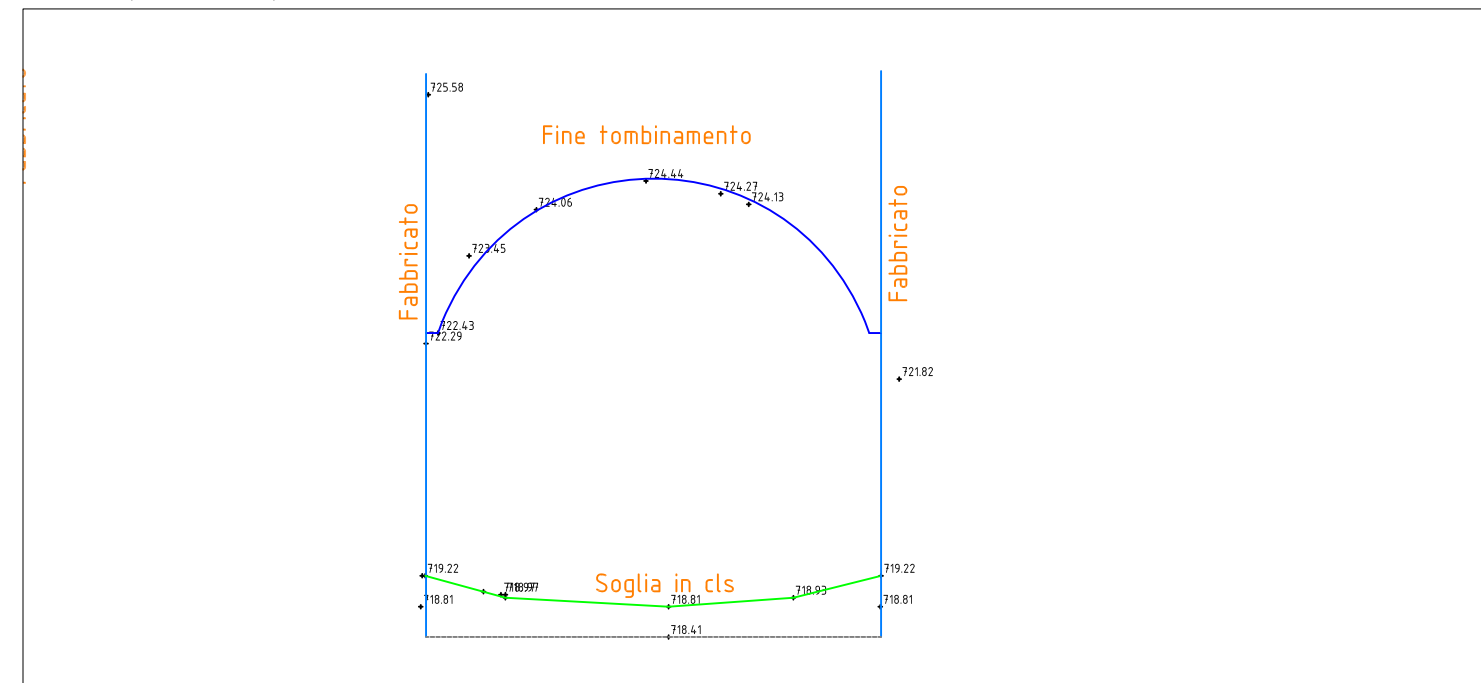


Opera 07

PLANIMETRIA RILIEVO

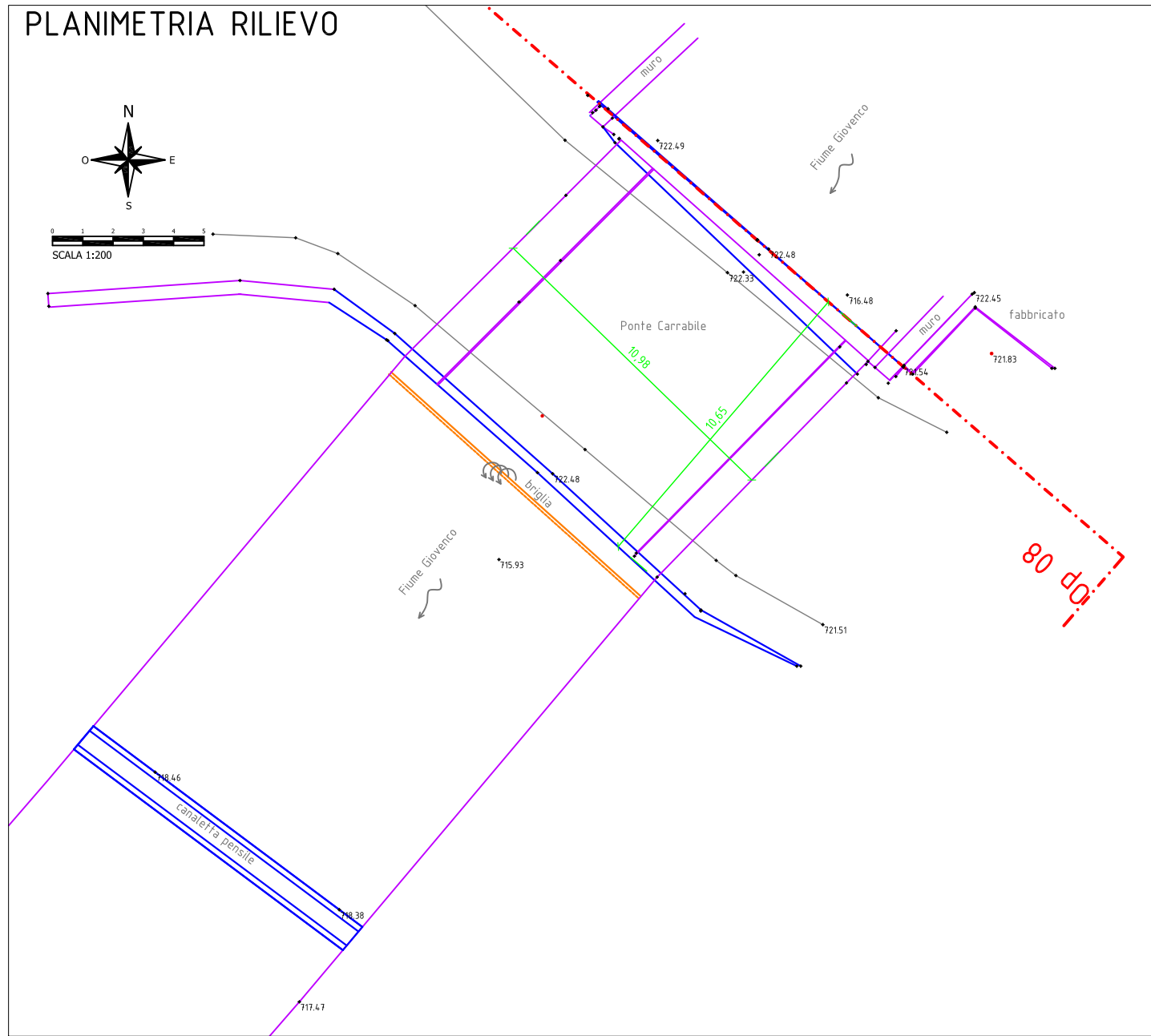


Prospetto Opera 07 - (Scala 1:100)

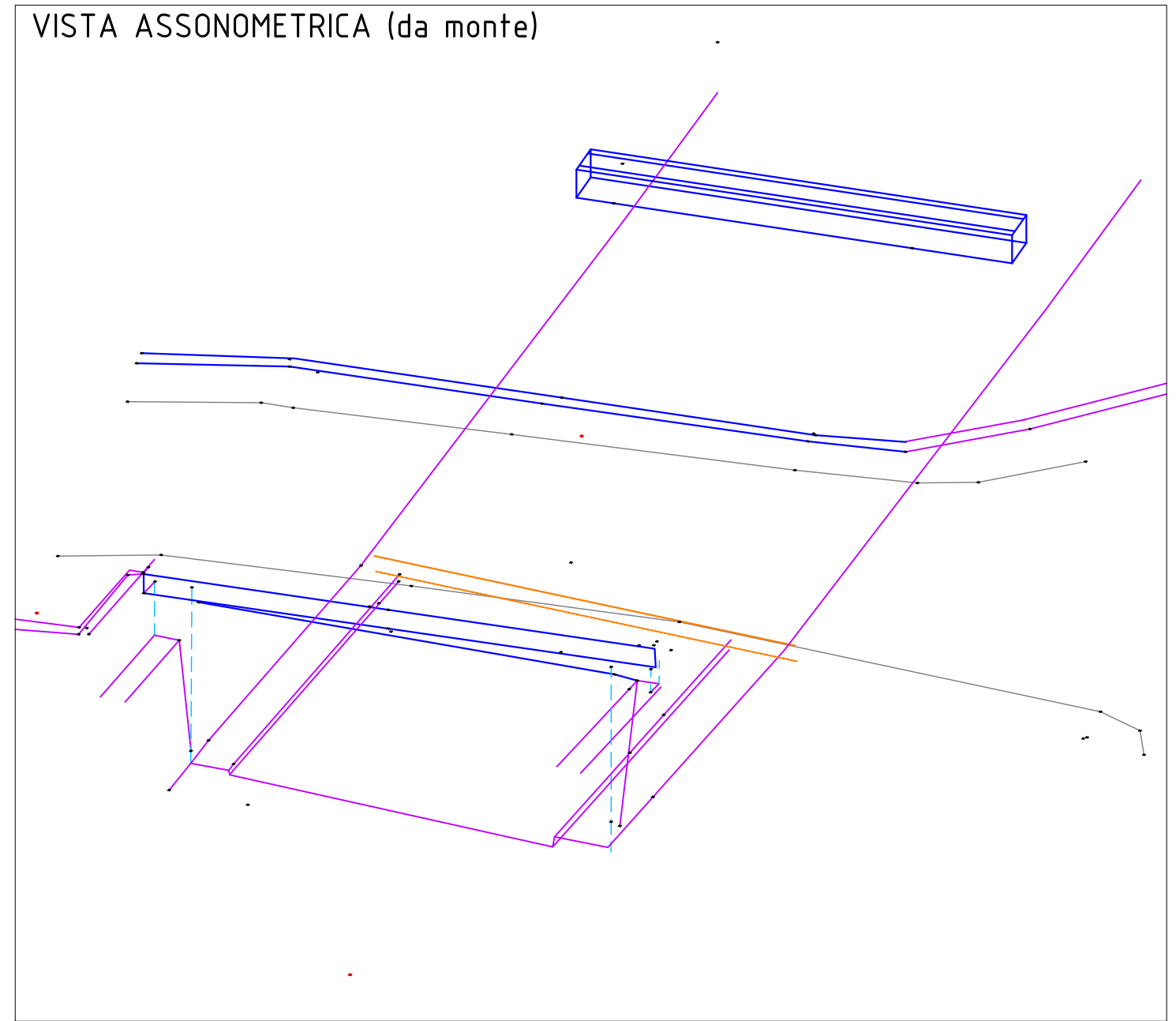


Opera 08

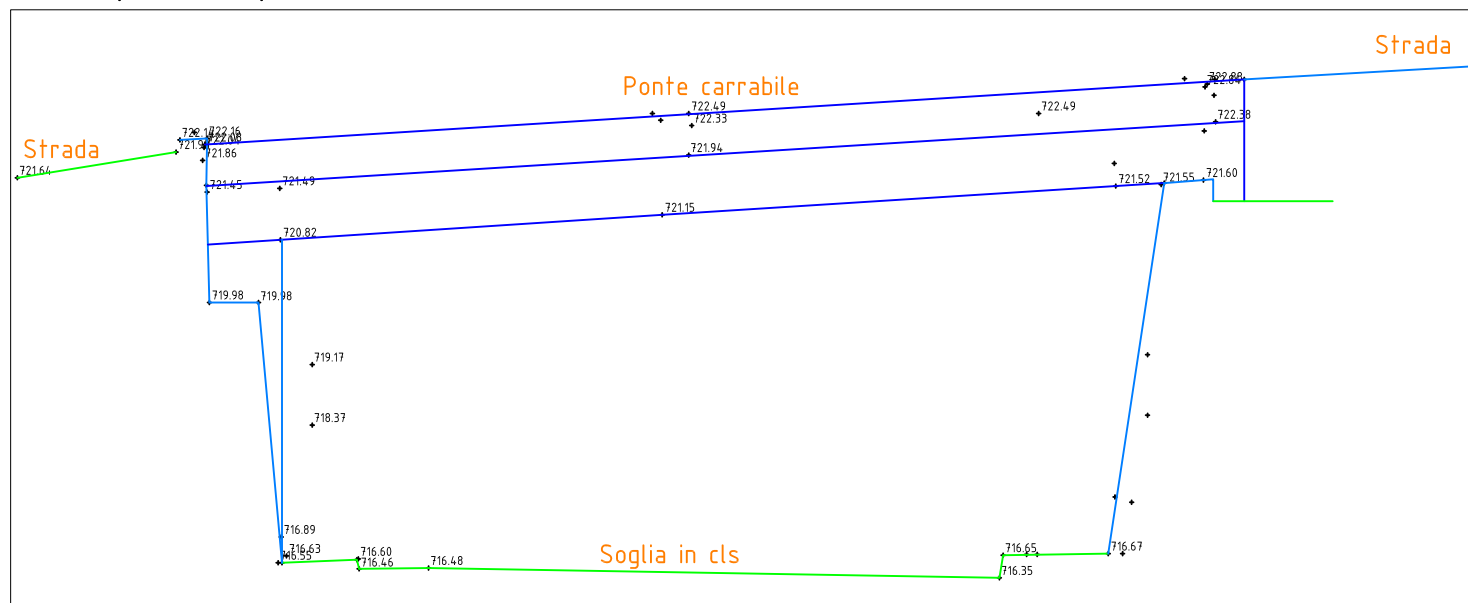
PLANIMETRIA RILIEVO



VISTA ASSONOMETRICA (da monte)

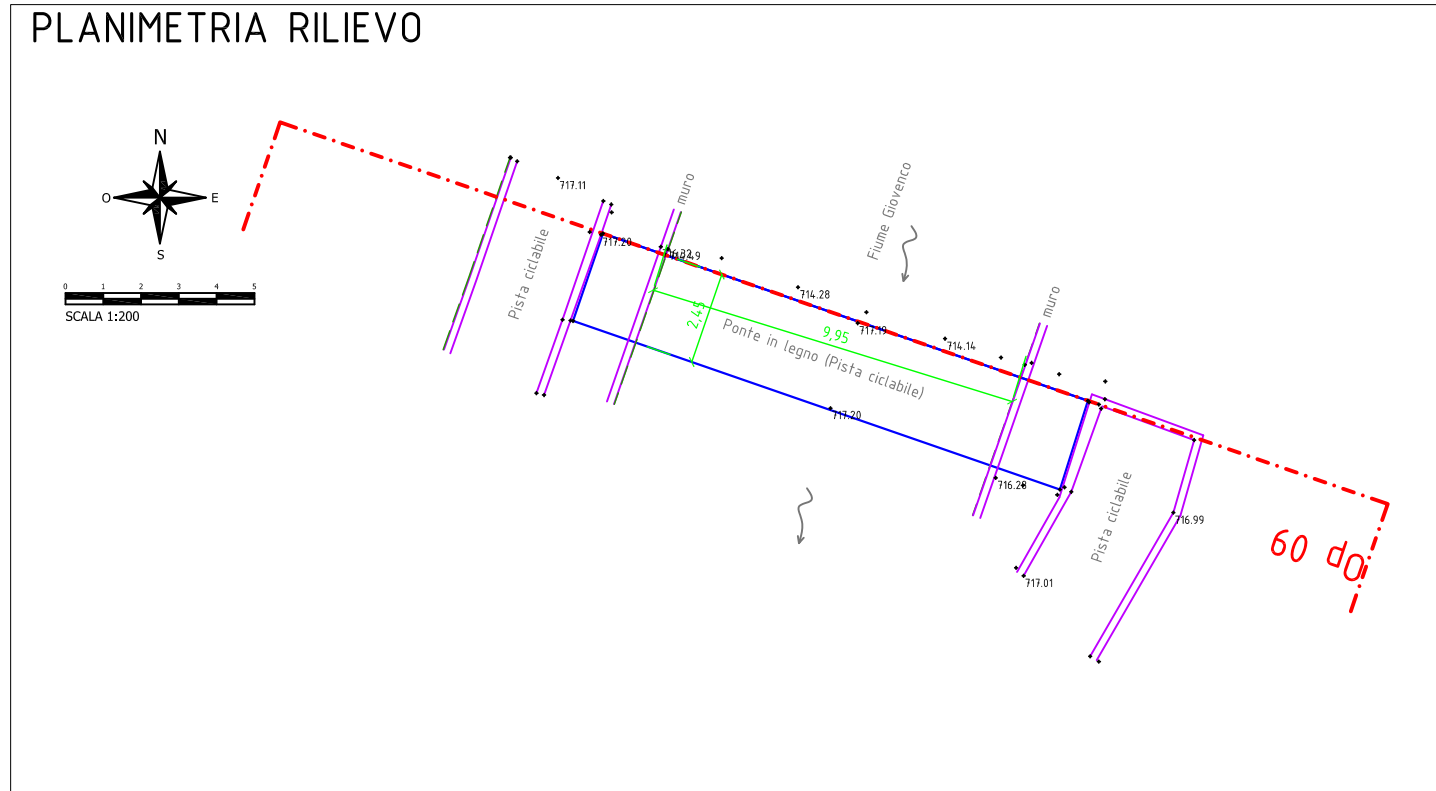


Prospetto Opera 08 - (Scala 1:100)

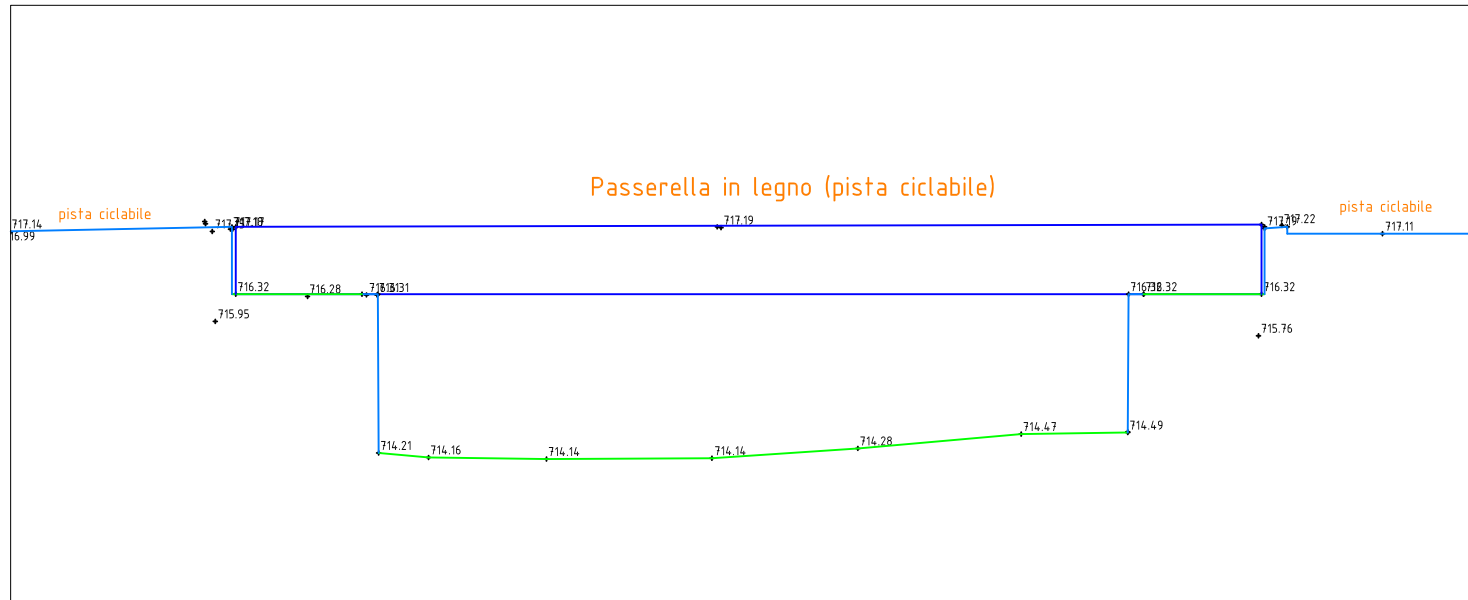


Opera 09

PLANIMETRIA RILIEVO

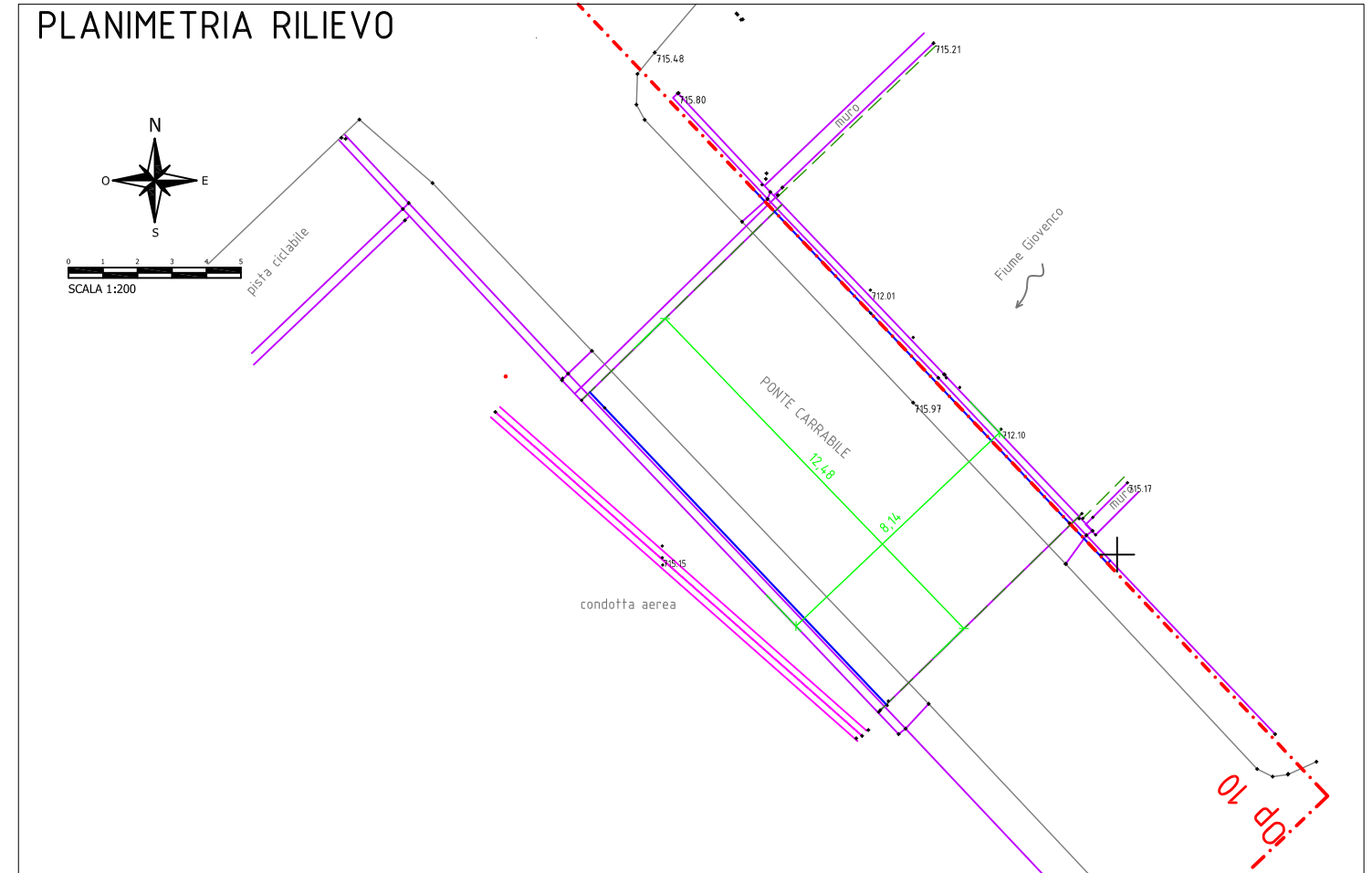


Prospetto Opera 09 - (Scala 1:100)

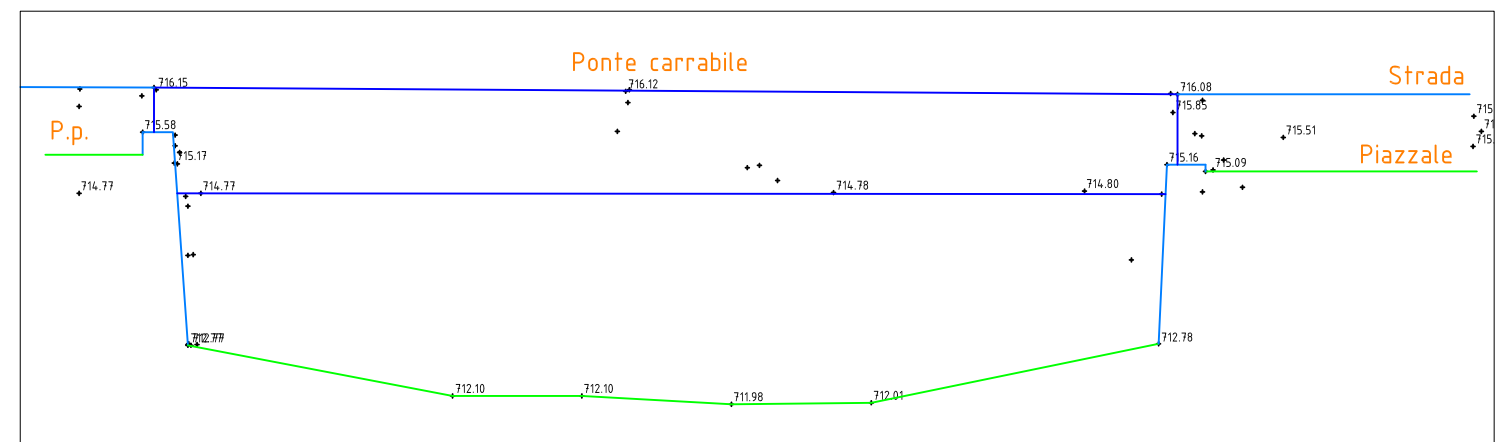


Opera 10

PLANIMETRIA RILIEVO

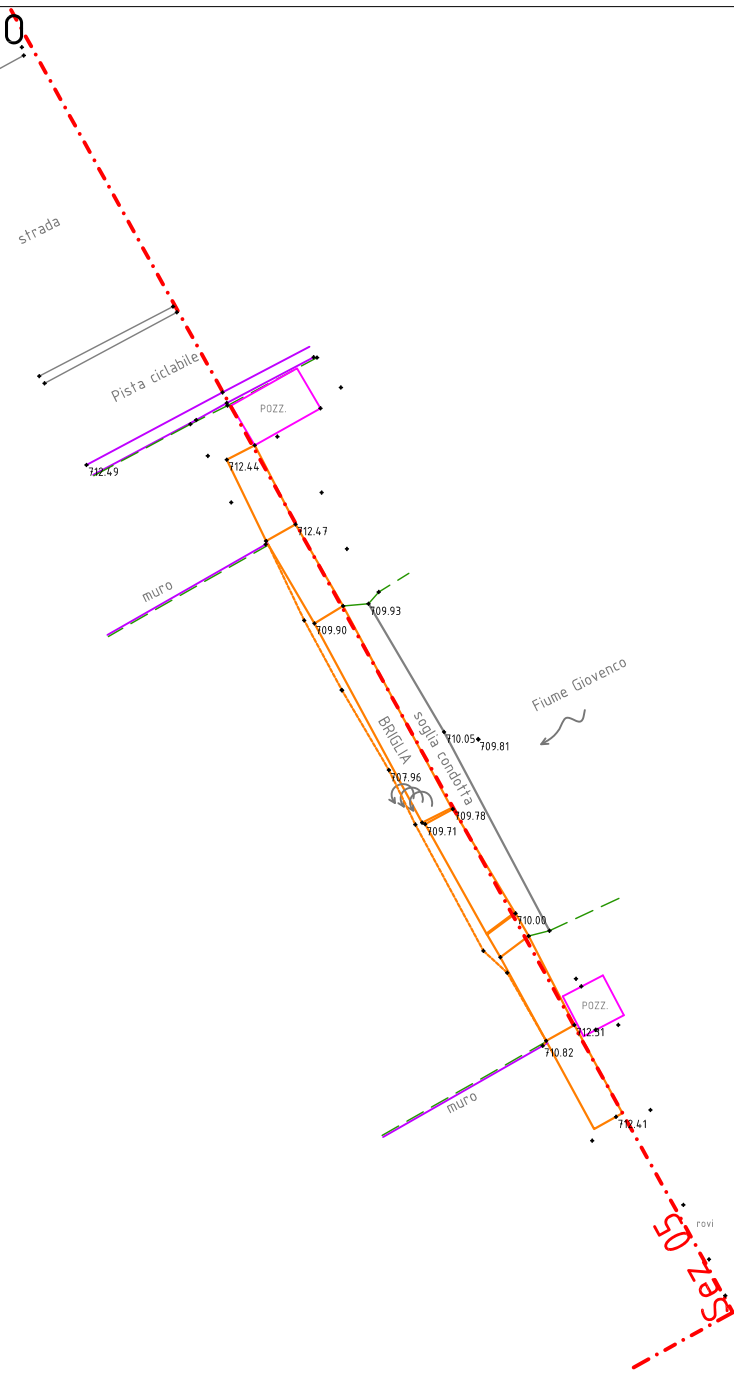
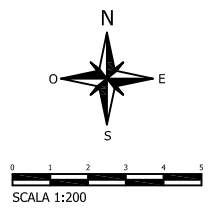


Prospetto Opera 10 - (Scala 1:100)

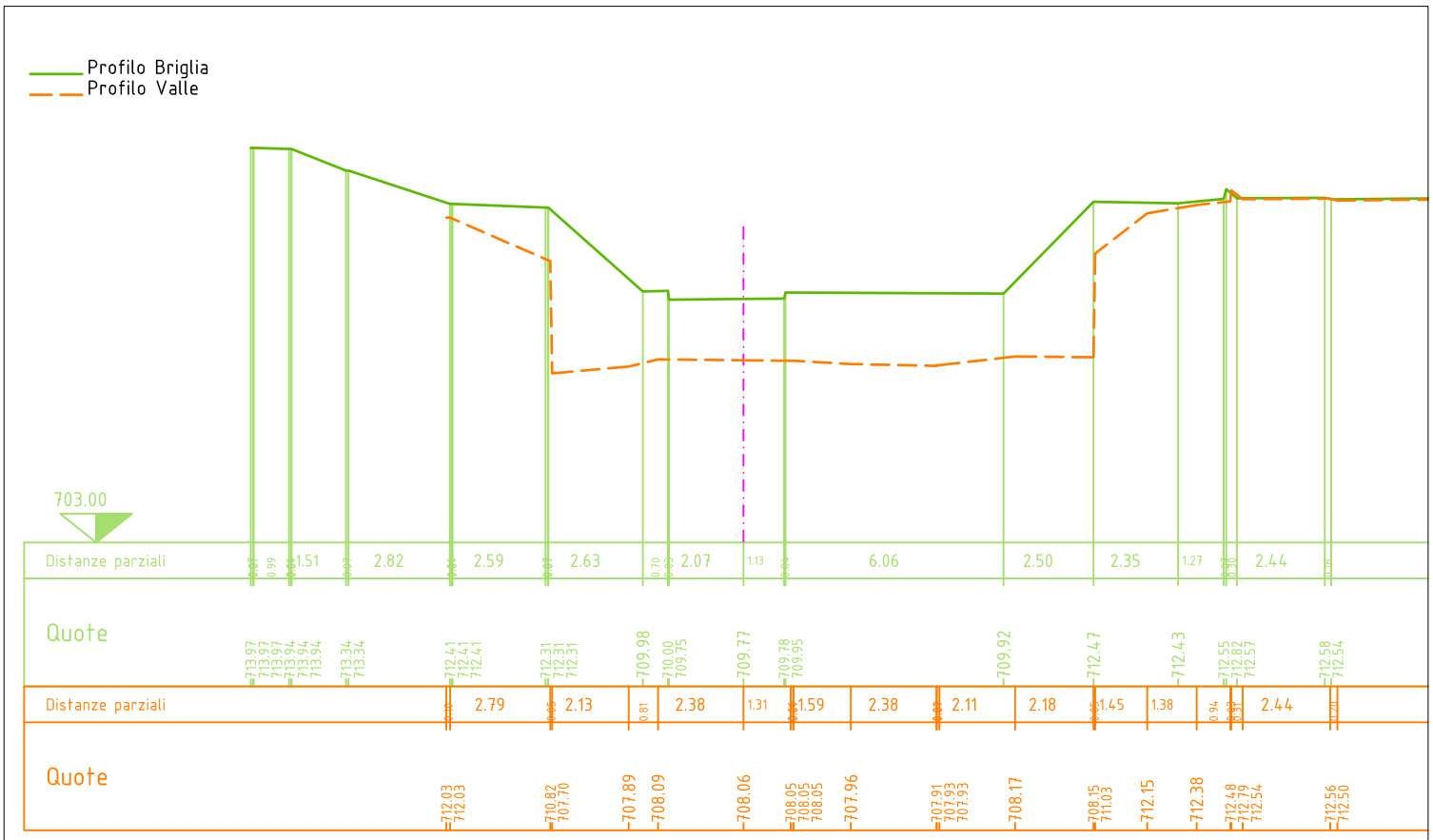


Sezione 05

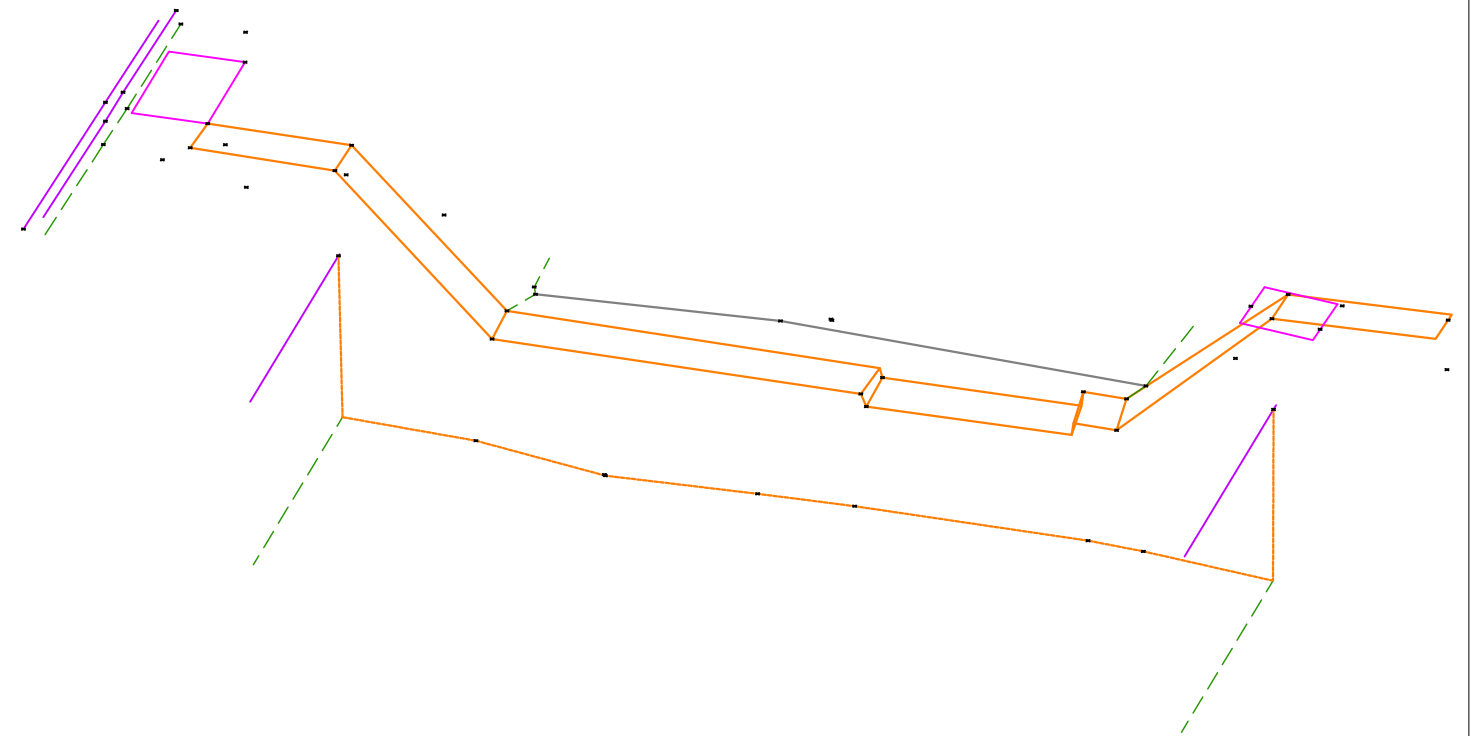
PLANIMETRIA RILIEVO



SEZIONE TRASVERSALE 05 - (Scala 1:200)

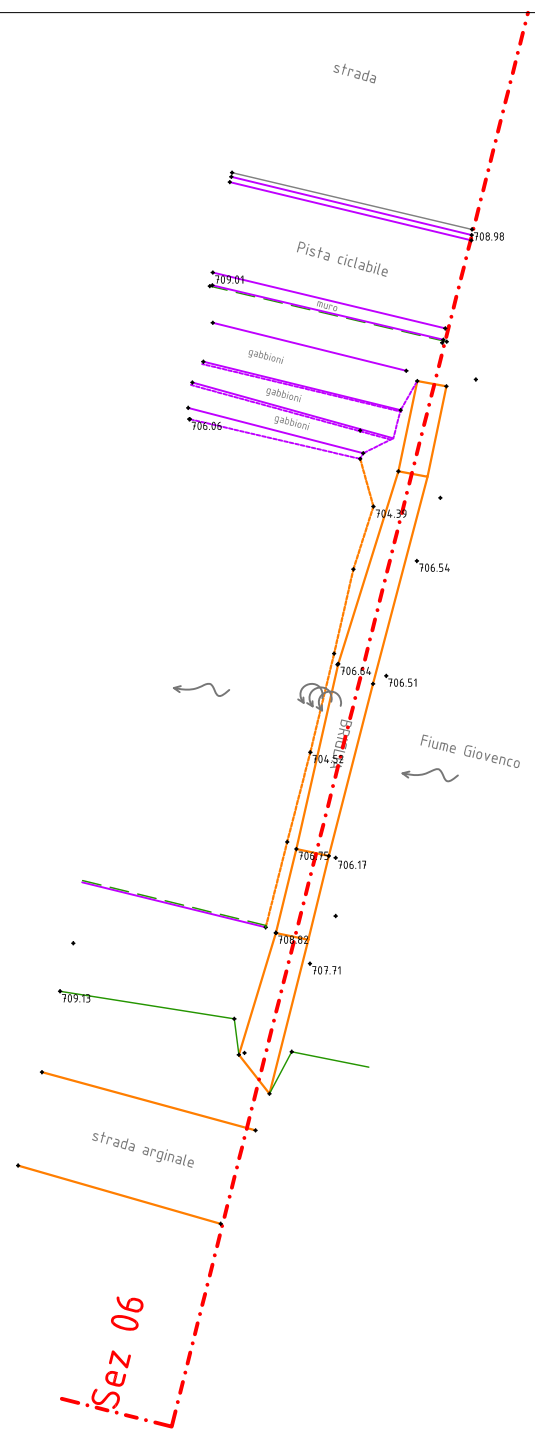
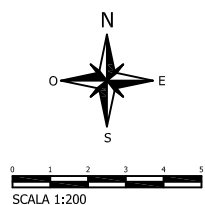


VISTA ASSONOMETRICA (da valle)

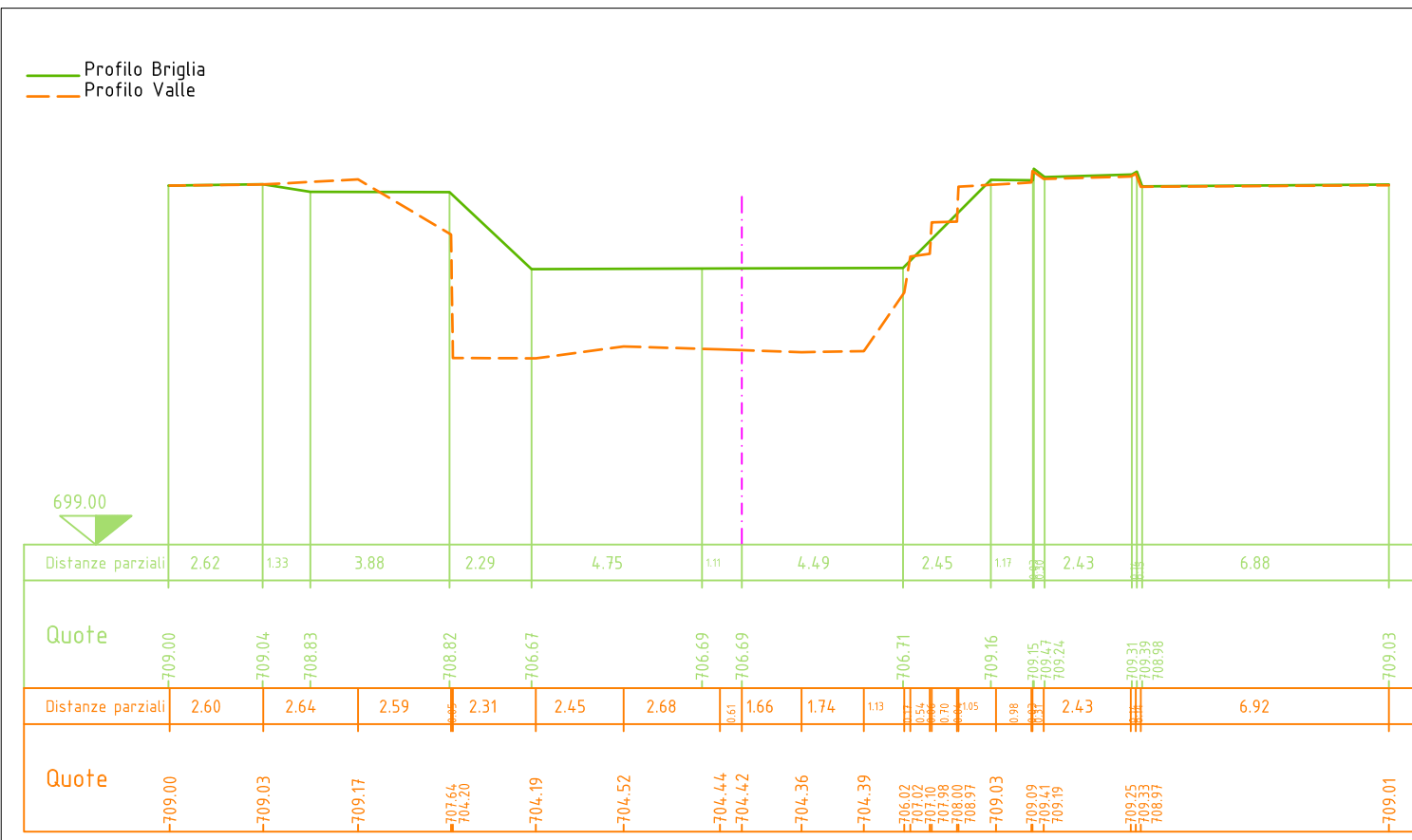


Sezione 06

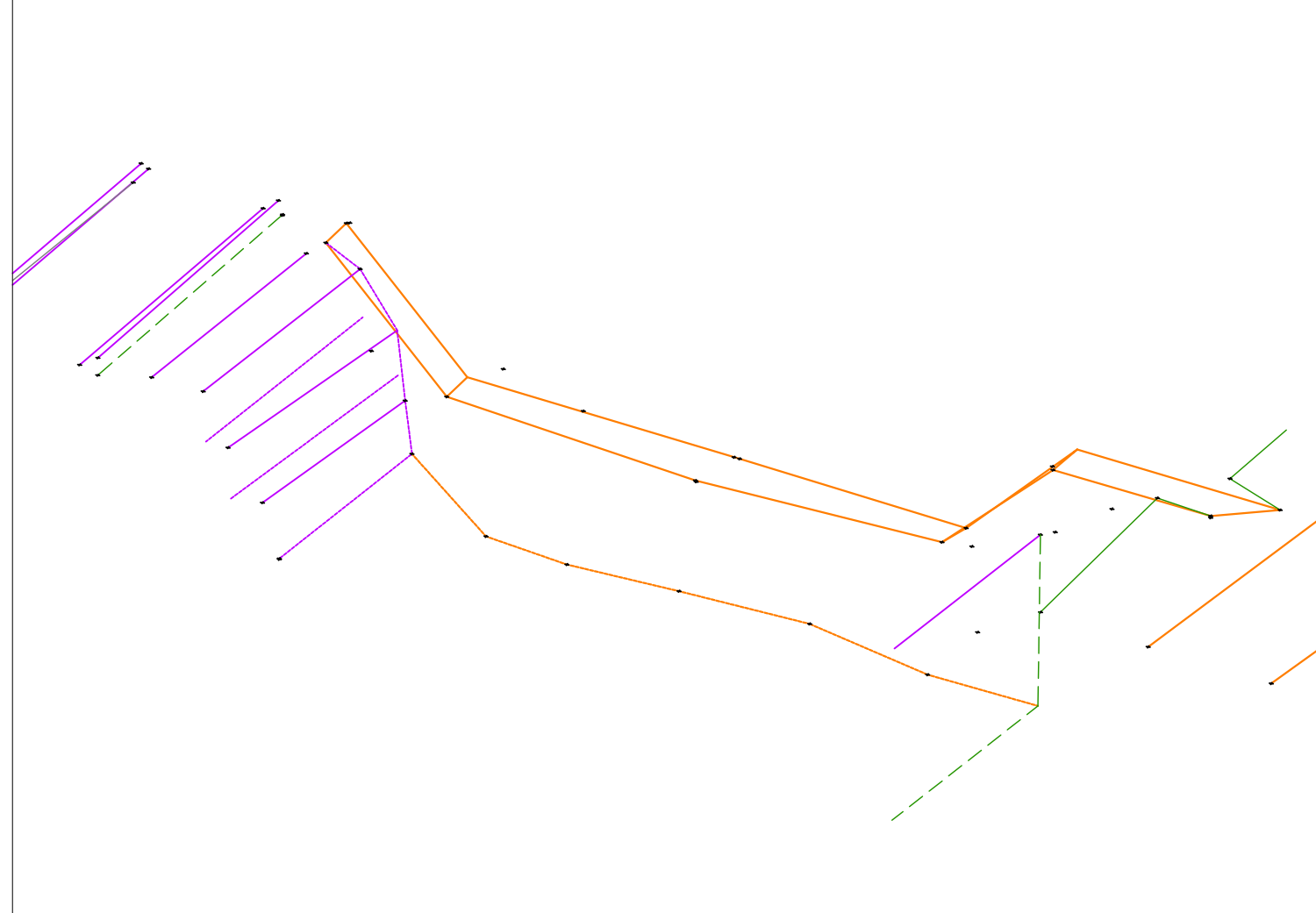
PLANIMETRIA RILIEVO



SEZIONE TRASVERSALE 06 - (Scala 1:200)

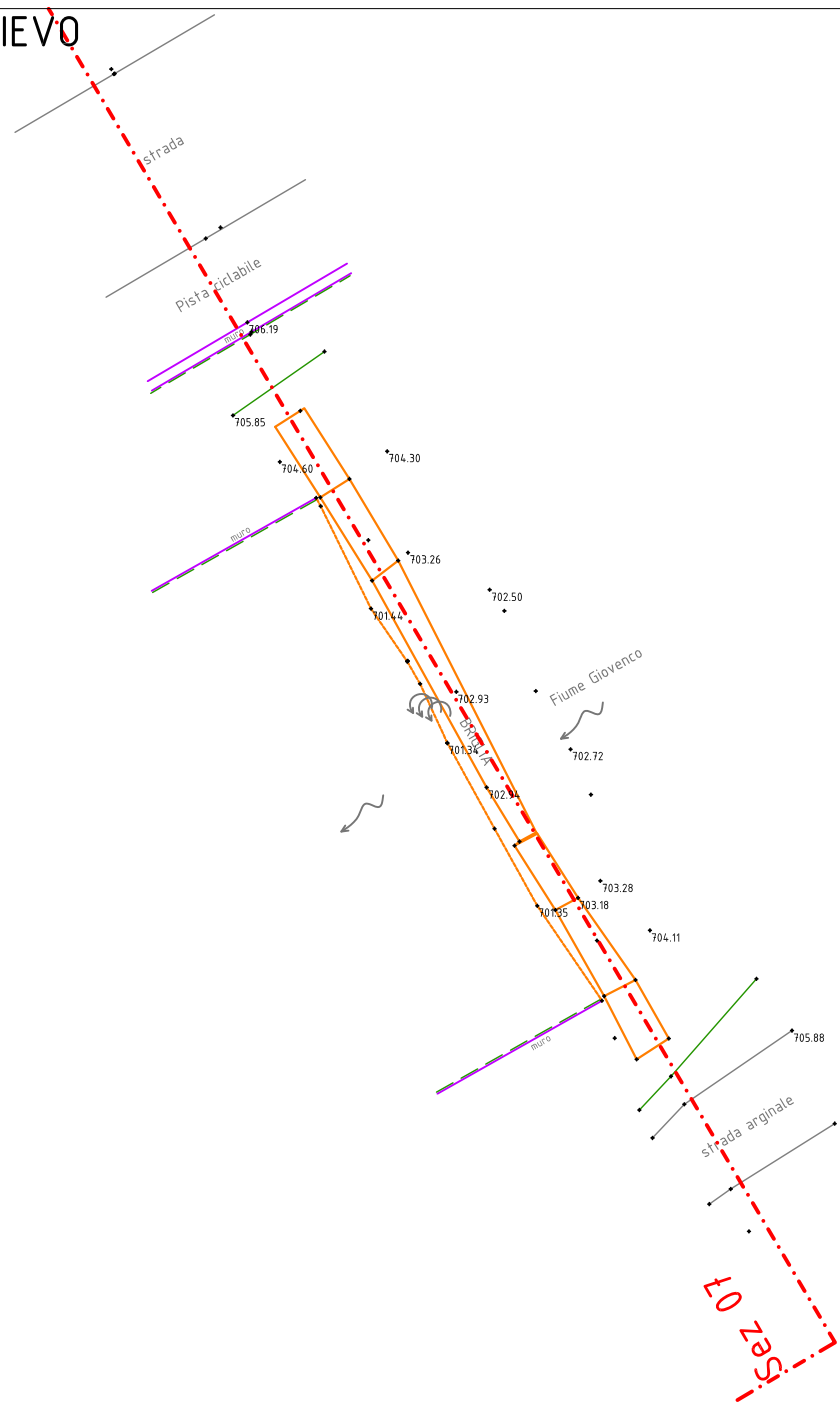
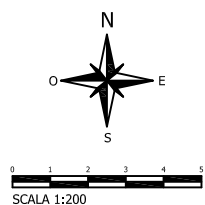


VISTA ASSONOMETRICA (da valle)

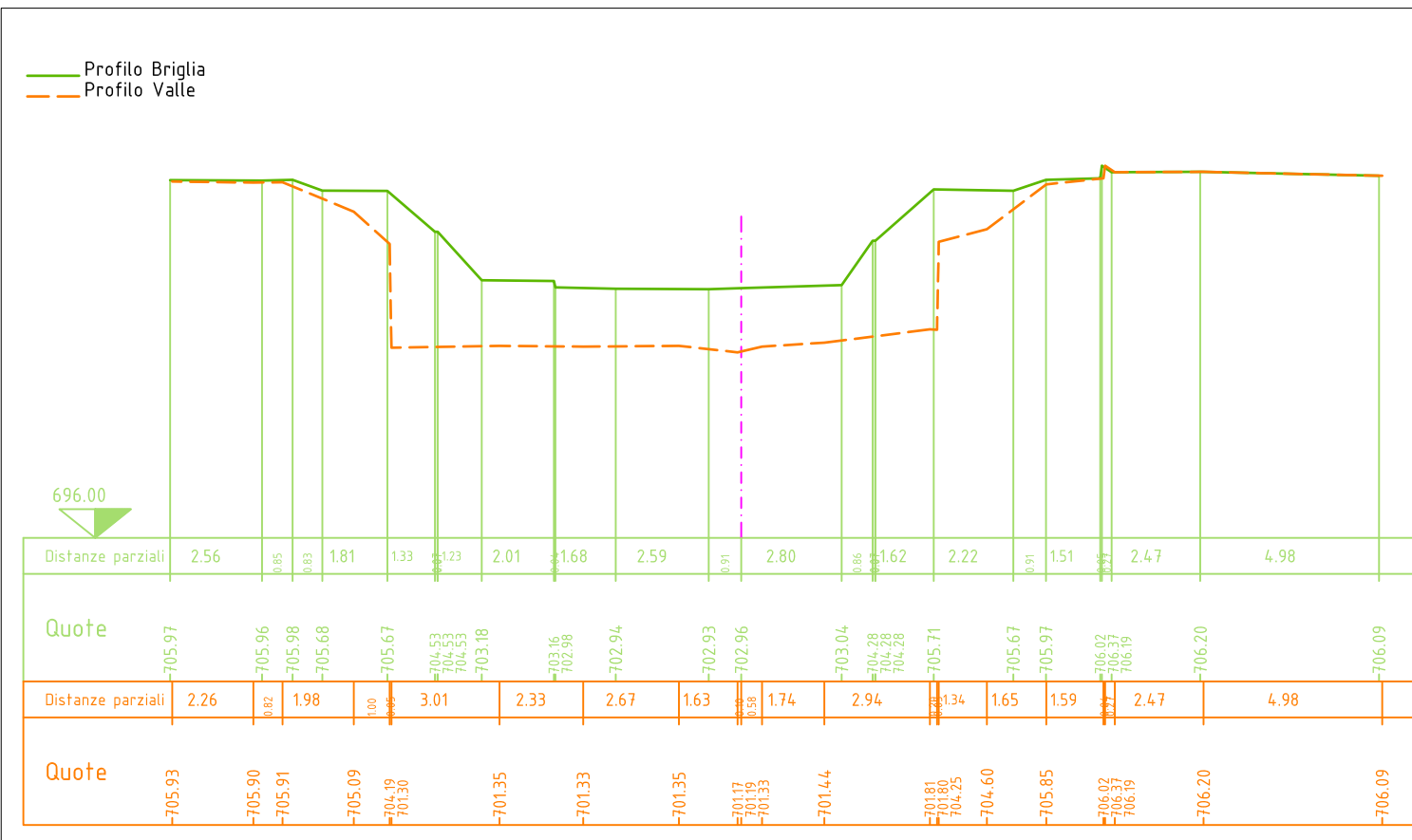


Sezione 07

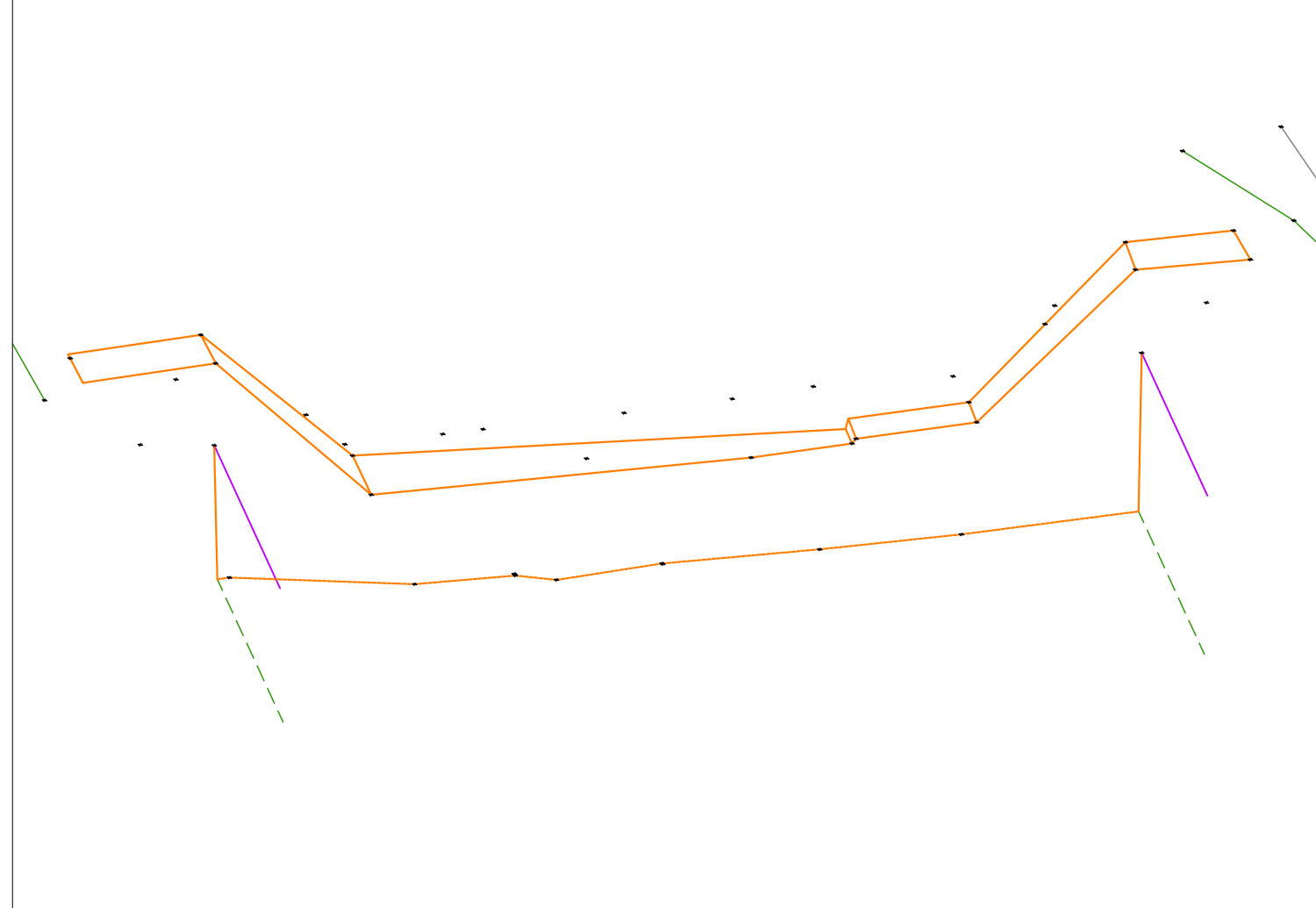
PLANIMETRIA RILIEVO



SEZIONE TRASVERSALE 07 - (Scala 1:200)

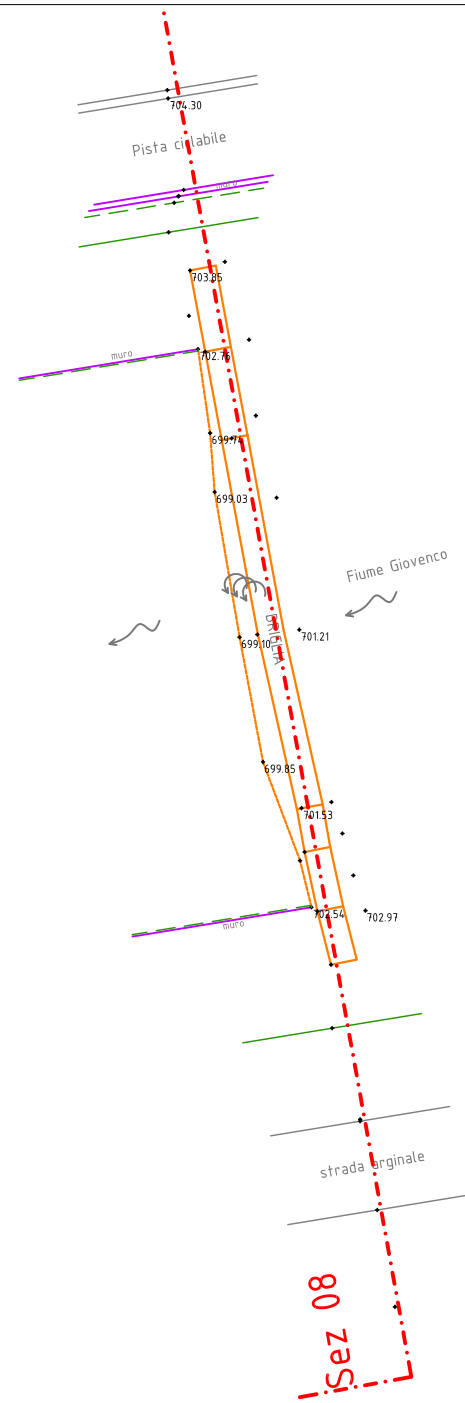
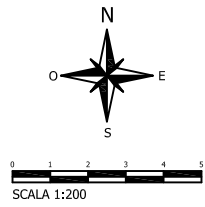


VISTA ASSONOMETRICA (da valle)

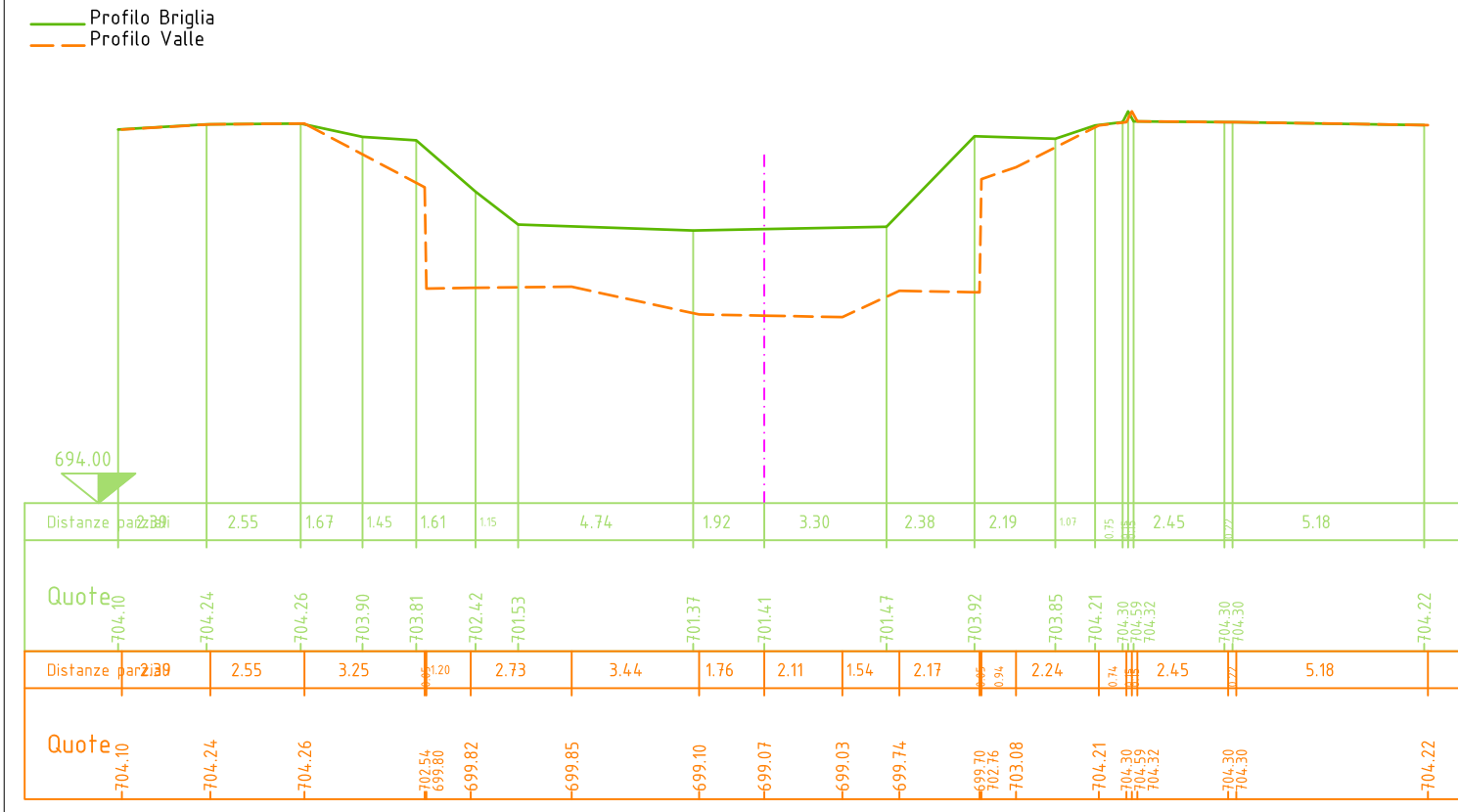


Sezione 08

PLANIMETRIA RILIEVO



SEZIONE TRASVERSALE 08 - (Scala 1:200)



VISTA ASSONOMETRICA (da valle)

